

# MERRITT ULTRA OPERATOR CHAIR SYSTEMS

FORMERLY SV1C

The MERRITT ULTRA consists of a rigid, heavy duty construction and oversized consoles to house a multitude of joysticks, controllers, and pilot devices.

## FEATURES

- Rotating or fixed base with customizable, oversized consoles
- Heavy-duty steel construction with beige powder coat finish
- A range of seat adjustments for positioning flexibility
- Vertical adjustable, console-mounted armrests
- Mechanical or pneumatic suspension



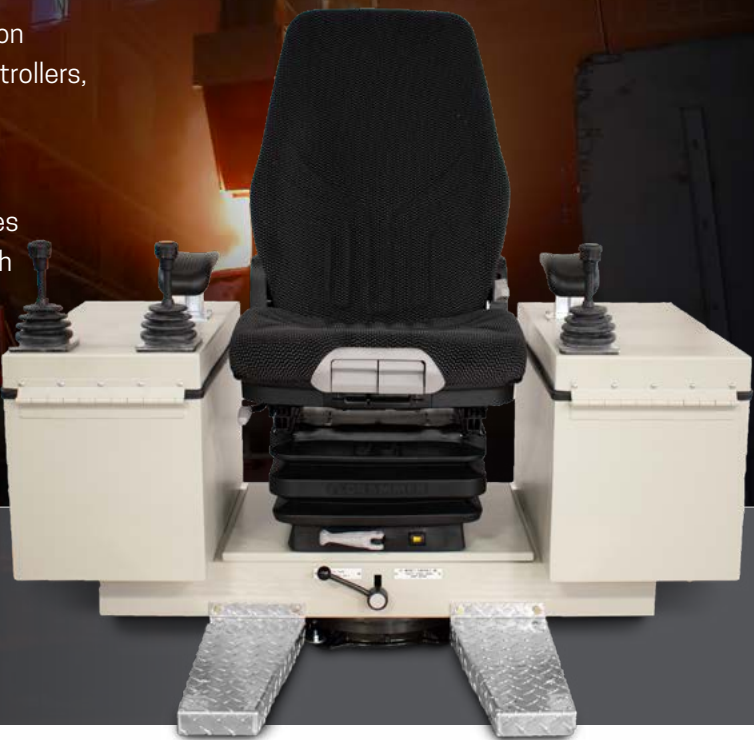
OVERSIZED  
CONSOLES



ROBUST  
& RUGGED



PRECISION  
CONTROL



OVERVIEW	PG 2
ADJUSTABILITY BASE OPTIONS	

SUSPENSION	PG 4
SUSPENSION OPTIONS	

SEATING	PG 5
SEAT TYPES SEAT ADD-ONS	

CONSOLES	PG 6
CONSOLE SIZES CONSOLE OPTIONS	

FOOT RESTS & FLOOR SLIDES	PG 7
FOOT RESTS FOOT PEDALS FLOOR SLIDES	

SPECIFICATIONS	PG 8
DIMENSIONS CONSOLE LAYOUTS	

# ADJUSTABILITY



STANDARD      OPTIONAL

## 1 ARMRESTS

Features vertical adjustable console-mounted armrests.

## 2 BACKREST

Seat backrest reclines backward & folds forward.

## 3 HEADREST

Features tilt & height adjustment.

## 4 SEAT SLIDE

Seat slides forward and backward independently of control consoles.

## 5 CONSOLES

Fixed, oversized consoles with flat or forward sloping covers. Optional console slide adjustment available.

## 6 ROTATION

Optional system rotation up to 270°. Available with pin lock or friction brake locking.

## 7 SUSPENSION

Mechanical or pneumatic options available with height, weight compensation, & shock absorption adjustments.

BASE OPTIONS

**ROTATING BASE**

Entire system rotates  
up to 270 degrees



OR

**FIXED BASE**

Fixed system with  
no rotation



ROTATING BASE TYPE



Accommodates up to  
150 terminal blocks

FIXED BASE TYPE



Accommodates up to  
150 terminal blocks

ROTATION TYPE



**FRICTION BRAKE**

System holds throughout  
270° of travel.

OR



**PIN LOCK**

4 locking positions (every 90°).  
Positions can be customized  
to your specifications.



Rotating base  
with friction brake  
rotation and optional  
2-piece footrests



## MECHANICAL



### MECHANICAL SUSPENSION FEATURES

- Mechanical weight adjustment (up to 285 or 400 lbs).
- Height adjustment of 2.8 in (3-step only).

WEIGHT UP TO  
**285 LB**  
[130 KG]

**3-STEP**  
PART #: 07.531

OR

WEIGHT UP TO  
**400 LB**  
[180 KG]

**HEAVY DUTY**  
PART #: 70.565

## PNEUMATIC (AIR)

### PNEUMATIC SUSPENSION FEATURES

- Automatic weight adjustment and positioning system that eliminates the process of manually setting the seat to the operator's weight.
- Adjustable shock absorption level that is ideal for machinery with rugged operations and/or conditions.
- Fore / aft isolator that reduces jolts / vibration and allows horizontal shock absorption.



WEIGHT UP TO  
**330 LB**  
[150 KG]

**STANDARD**  
12V PART #: 07.803  
24V PART #: 07.861

OR

WEIGHT UP TO  
**375 LB**  
[170 KG]

**WIDE**  
24V PART #: 70.327

OR

WEIGHT UP TO  
**485 LB**  
[220KG]

**HEAVY DUTY**  
24V PART #: 70.465

## ACTIMO SEAT

### STANDARD FEATURES

- Ultra-tough velour or vinyl upholstery
- High backrest for optimum back and side support
- Contoured cushion design for increased comfort
- Field replaceable cushions (backrest and seat)
- Document pouch



**VELOUR**  
**PART #: 07.942**

OR



**VINYL**  
**PART #: 07.961**

### ADJUSTMENT FEATURES



#### BACKREST RECLINE & COLLAPSE

Features 80° backrest recline adjustable in 2° increments & the ability to fold forward for transportation and service.



#### HORIZONTAL SEAT SLIDE

8" of horizontal forward & backward seat movement. 16" of slide travel available as option below.



#### LUMBAR SUPPORT

Mechanically controlled lumbar support that adjusts the curvature & height of the backrest cushion.



#### SEAT CUSHION DEPTH & TILT

Adjusts forward 2.4" in 5 increments. Also tilts 3° - 11° in 4 increments to reduce thigh pressure.



## SEAT OPTIONS



**ADJUSTABLE HEADREST**  
**(VELOUR) PART #: 07.693**  
**(VINYL) PART #: 07.964**



**ADDITIONAL SEAT SLIDE (16")**  
**PART #: 07.751**



**OPERATOR PRESENCE SWITCH**  
**(12V) PART #: 70.245**  
**(24V) PART #: 70.244**



**LAP SEAT BELT**  
**PART #: 12.020**

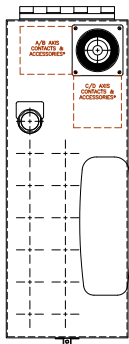


**SEAT-MOUNTED ARMRESTS\***  
**(LEFT-HAND) PART #: 07.711**  
**(RIGHT-HAND) PART #: 07.712**



**LAP SEAT BELT**  
**WITH ELECTRICAL CONTACT**  
**PART #: 12.015**

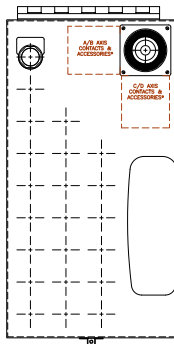
## CONSOLES WIDTH



**9"**

Allows for 13 devices  
& 1 joystick

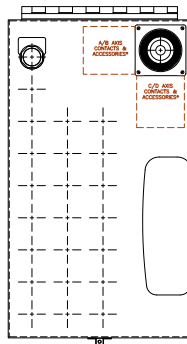
OR



**12.5"**

Allows for 24 devices & 1  
joystick or 22 devices  
& 2 (1-axis) joysticks

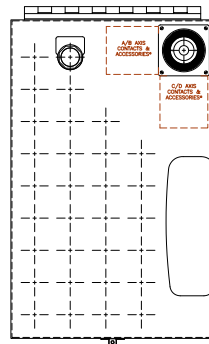
OR



**13.5"**

Allows for 27 devices & 1  
joystick or 23 devices  
& 2 joysticks

OR



**15"**

Allows for 33 devices & 1  
joystick or 31 devices  
& 2 joysticks

## CONSOLES OPTIONS

\*22 mm pilot devices available upon request

### JOYSTICKS & CONTROLLERS

- Multi-Axis Joysticks
  - Single Axis Controllers
  - Rotary Switches
- See the full range at  
[jrmerritt.com](http://jrmerritt.com)



### 30.5 MM\* PILOT DEVICES

- Push Buttons
- Illuminated Push Buttons
- E-Stops
- Selector Switches
- Indicator Lights
- Alarms / Buzzers



### LOUVERS

Plastic louvers for console  
ventilation



### SLIDING CONSOLES

Forward & backward horizontal  
console slide adjustment



### SLOPED COVERS

Forward sloped console  
covers (13.5" or 15" only)



### STAINLESS COVERS

Stainless steel console  
covers for marine applications

## FOOTRESTS



2-piece fixed  
footrest shown



### 2-PIECE FIXED

Two diamond plate, fixed  
footrests that rotate  
with system

OR



### 1-PIECE FIXED

Platform-style, diamond  
plate footrest that rotates  
with system

## FOOT PEDALS

J.R. Merritt heavy-duty foot pedals are designed  
with rugged, sealed construction, and are suitable  
for precise control in high duty cycle applications.

**Available in:**

- Proportional
- Step
- On/Off



### FP1

Step or proportional control.  
Learn more at [jrmerritt.com](http://jrmerritt.com)

OR

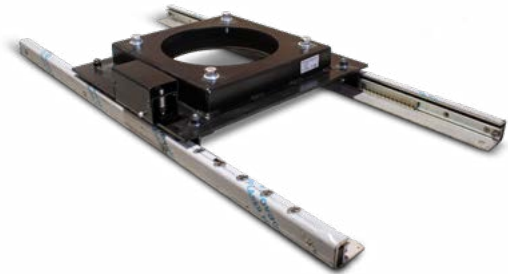


### FP7

On/off control  
Learn more at [jrmerritt.com](http://jrmerritt.com)

## FLOOR SLIDES

\*Custom length floor slides available upon request



### 24" (STANDARD)

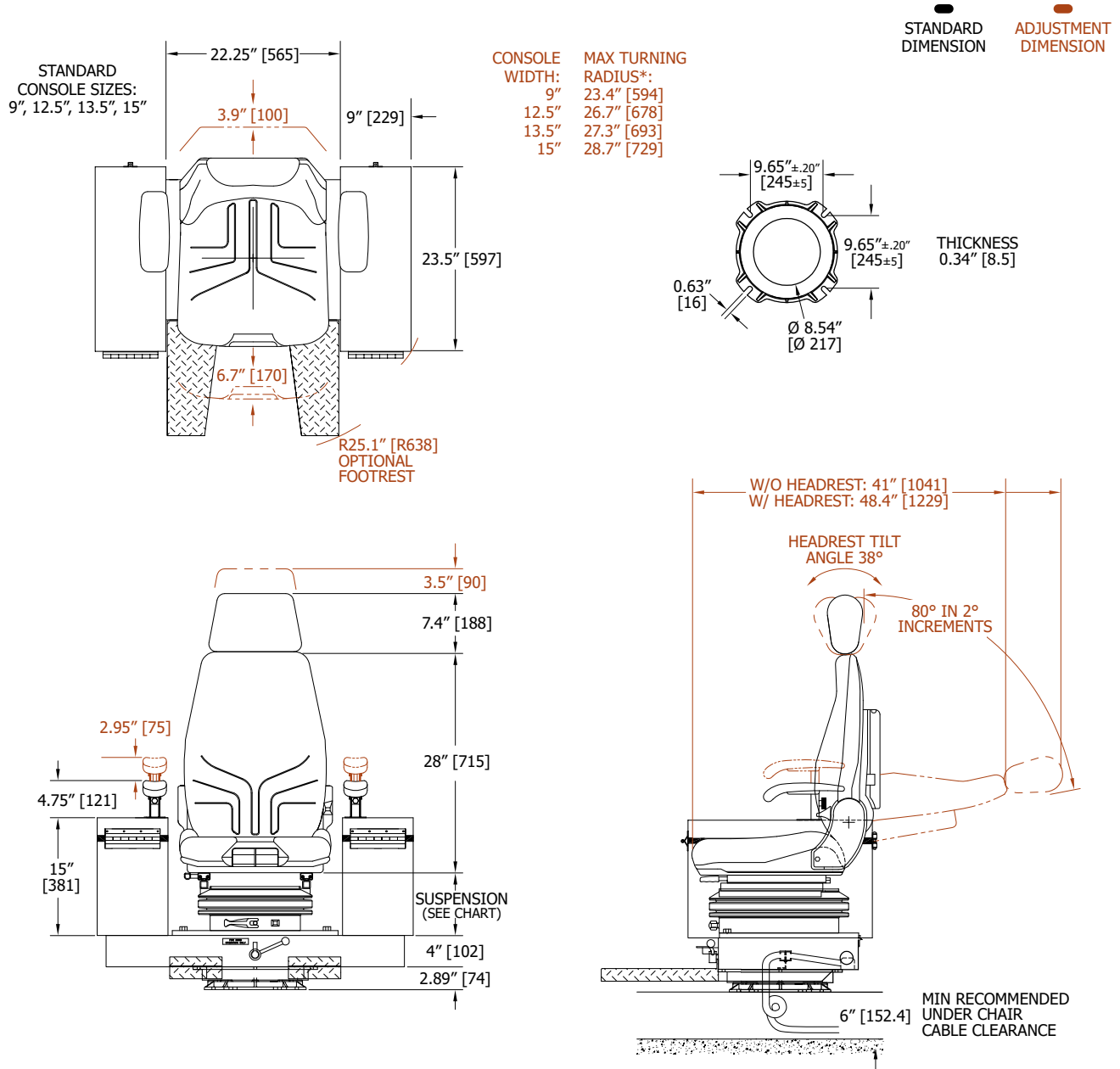
Floor slide with 24" travel and 24VDC solenoid lock

Floor slides can optimize installation space and  
provide improved usability for various operational  
tasks. J.R. Merritt Controls floor slides are stainless  
steel and feature quick release adjustment that allow  
for slide operation while seated.

**Standard features:**

- 24" of slide travel\*
- 24VDC solenoid lock

## DIMENSIONS | MERRITT ULTRA WITH FLAT CONSOLES

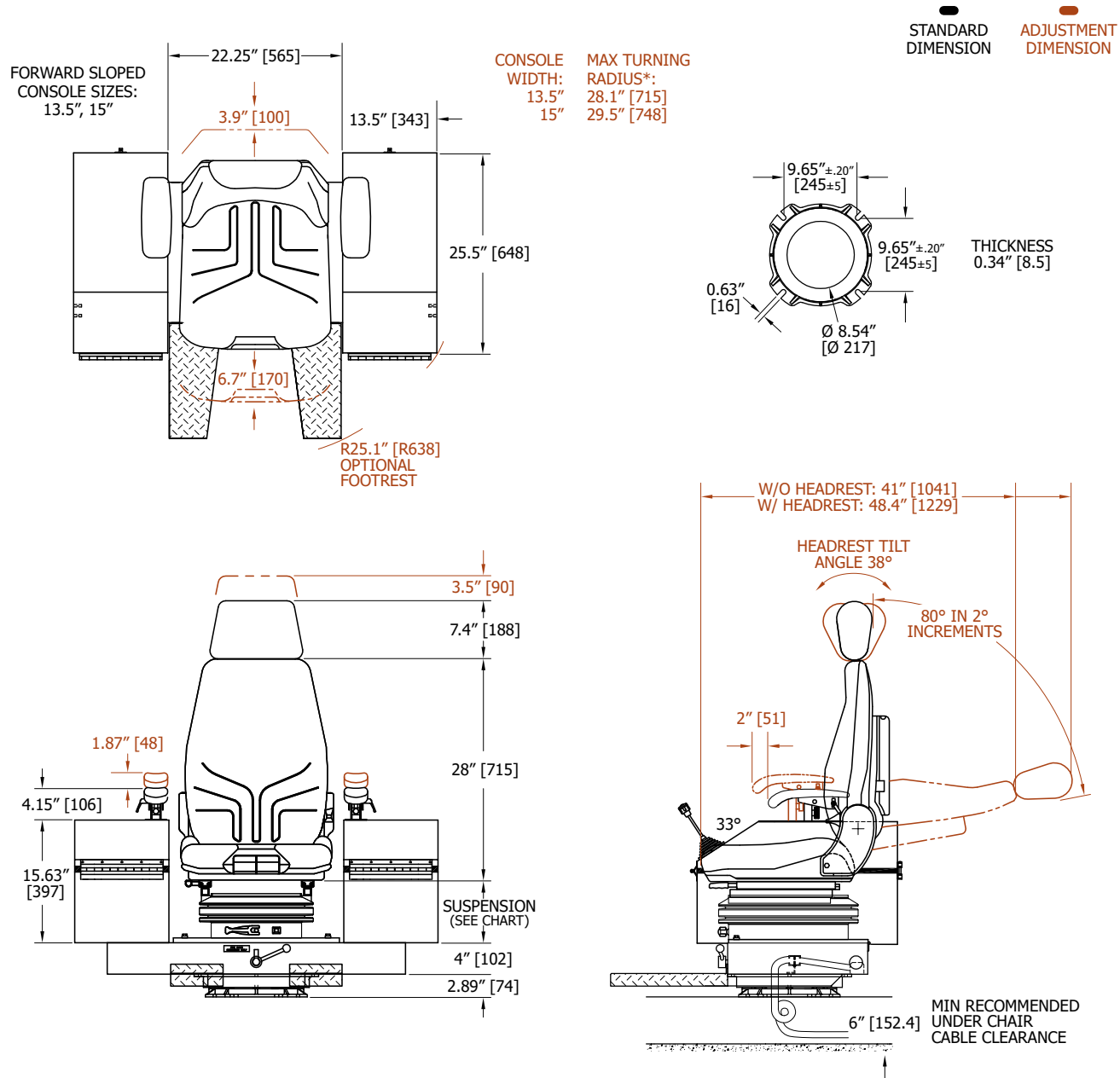


\*ONLY APPLIES TO MODELS WITH ROTATING BASE

Suspension	1st Position	2nd Position	3rd Position	4th Position	Suspension dimensions are subject to weight compensation adjustment. The above specifications are a generic representation of a custom built product and are for sales clarification only. Contact us if dimensions are critical or if a certified drawing is required.
3-Step Mechanical	6.1" [156]	7.3" [186]	8.5" [216]	--	
4-Step Mechanical	5.4" [137]	6.6" [167]	7.8" [197]	8.6" [217]	
Pneumatic (Air)	Auto to 7.2" [183] / Adjust +3.2" [80], -0.0" [0]				



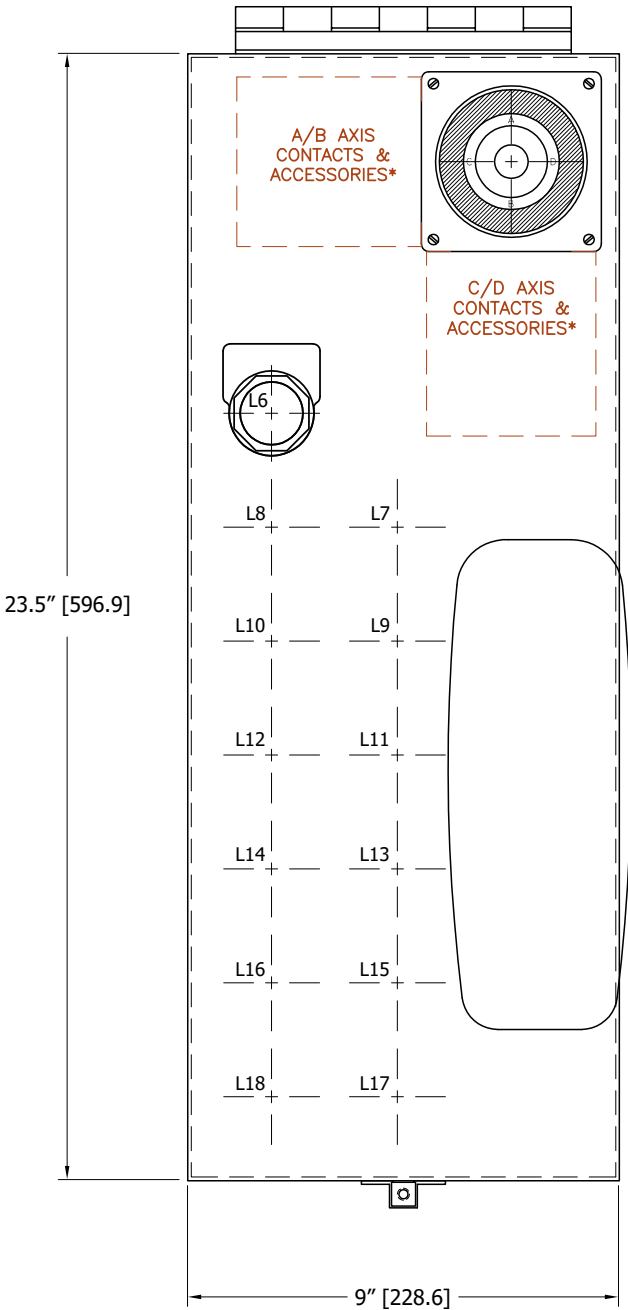
## DIMENSIONS | MERRITT ULTRA WITH FORWARD SLOPED CONSOLES



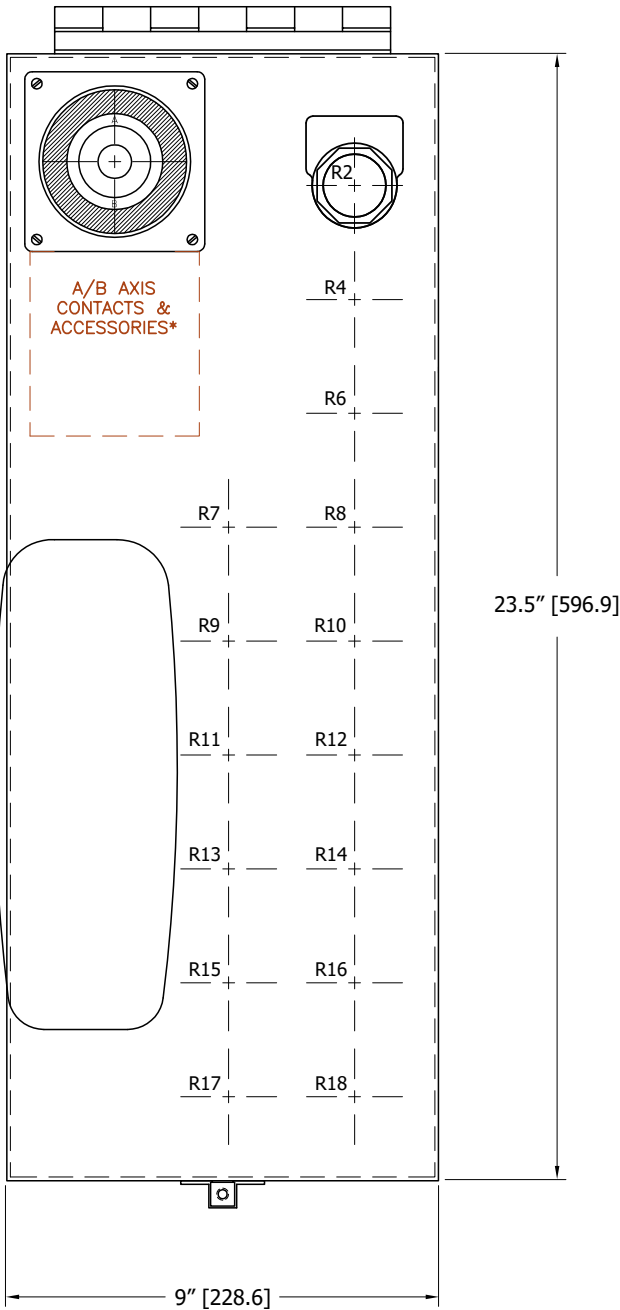
\*ONLY APPLIES TO MODELS WITH ROTATING BASE

Suspension	1st Position	2nd Position	3rd Position	4th Position	Suspension dimensions are subject to weight compensation adjustment. The above specifications are a generic representation of a custom built product and are for sales clarification only. Contact us if dimensions are critical or if a certified drawing is required.
3-Step Mechanical	6.1" [156]	7.3" [186]	8.5" [216]	--	
4-Step Mechanical	5.4" [137]	6.6" [167]	7.8" [197]	8.6" [217]	
Pneumatic (Air)	Auto to 7.2" [183] / Adjust +3.2" [80], -0.0" [0]				

**LEFT CONSOLE**  
SHOWN WITH 2-AXIS JOYSTICK



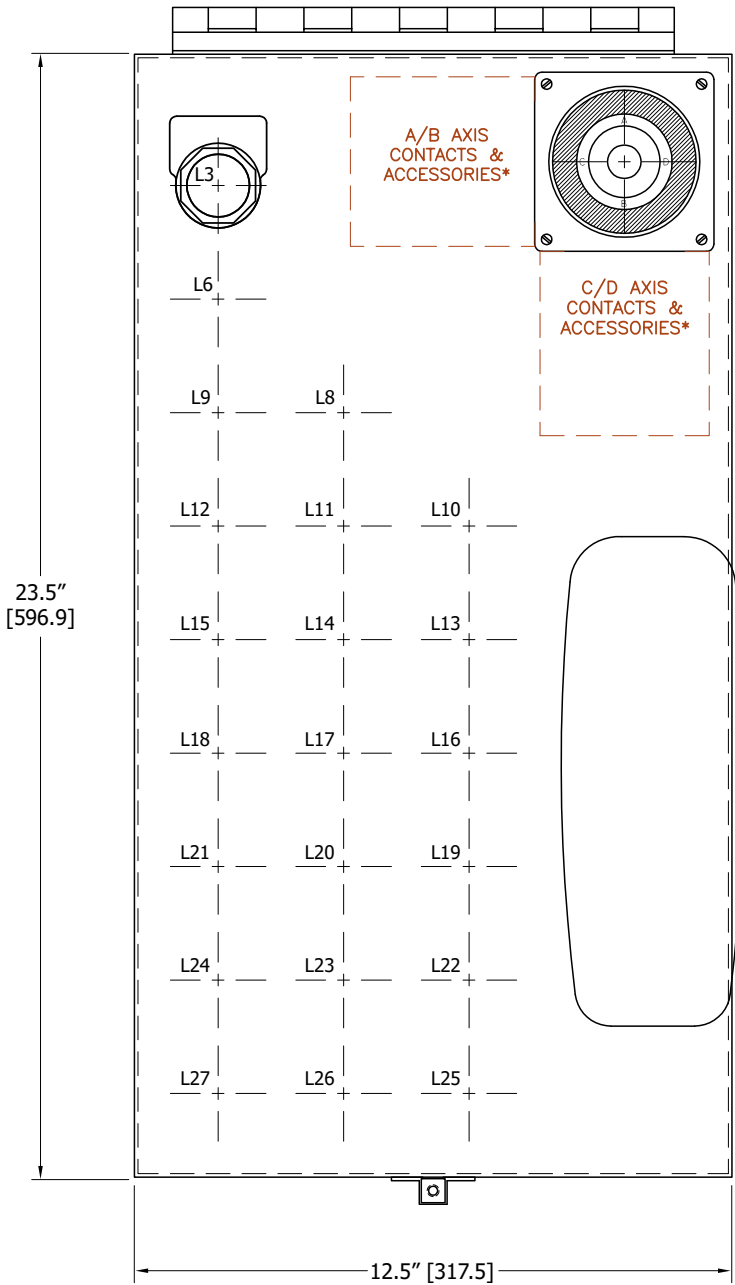
**RIGHT CONSOLE**  
SHOWN WITH 1-AXIS CONTROLLER



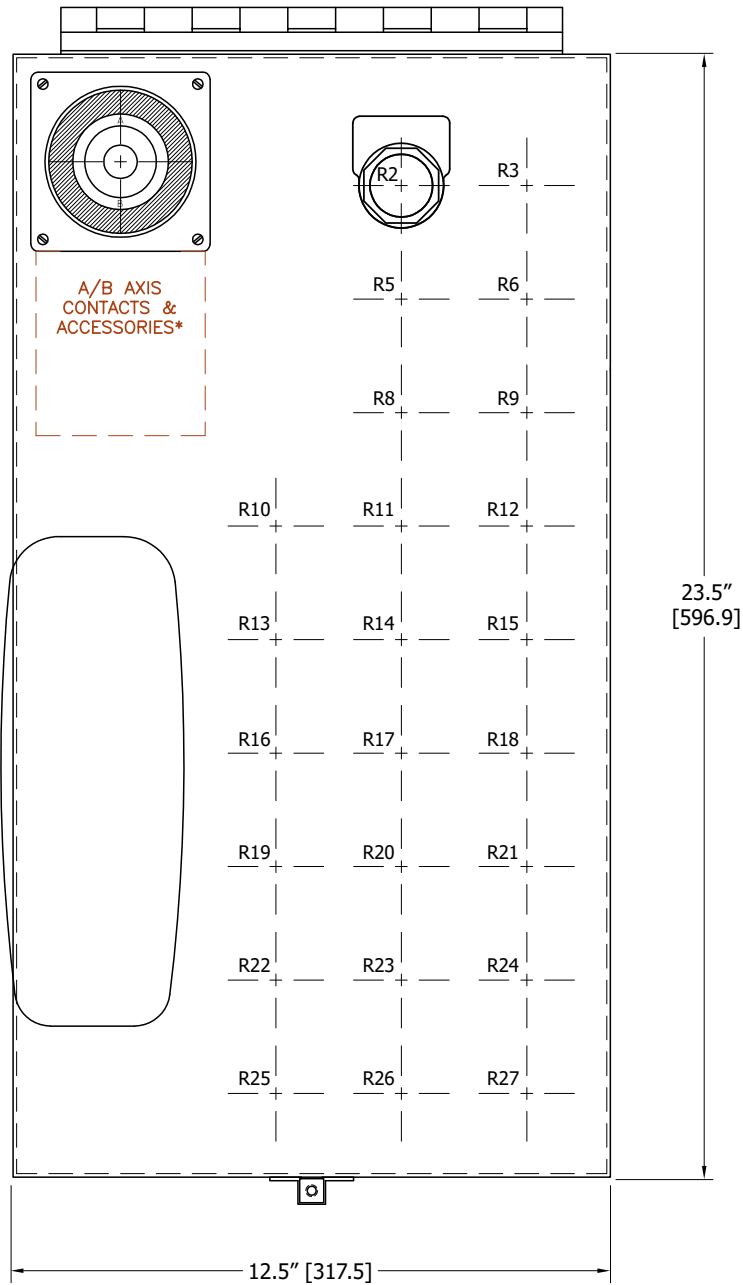
\*Outline represents joystick drive with 5 contact blocks or 2 contact blocks with a potentiometer or encoder

# 12.5" CONSOLE

**LEFT CONSOLE**  
SHOWN WITH 2-AXIS JOYSTICK



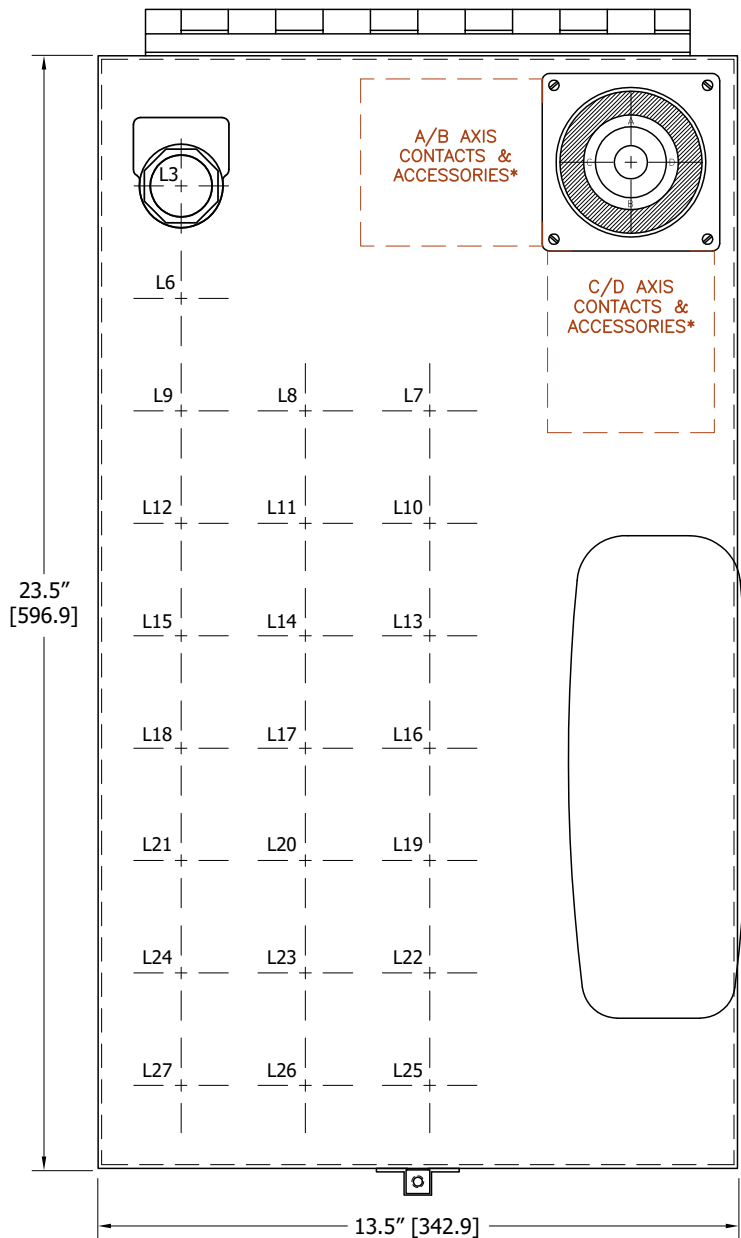
**RIGHT CONSOLE**  
SHOWN WITH 1-AXIS CONTROLLER



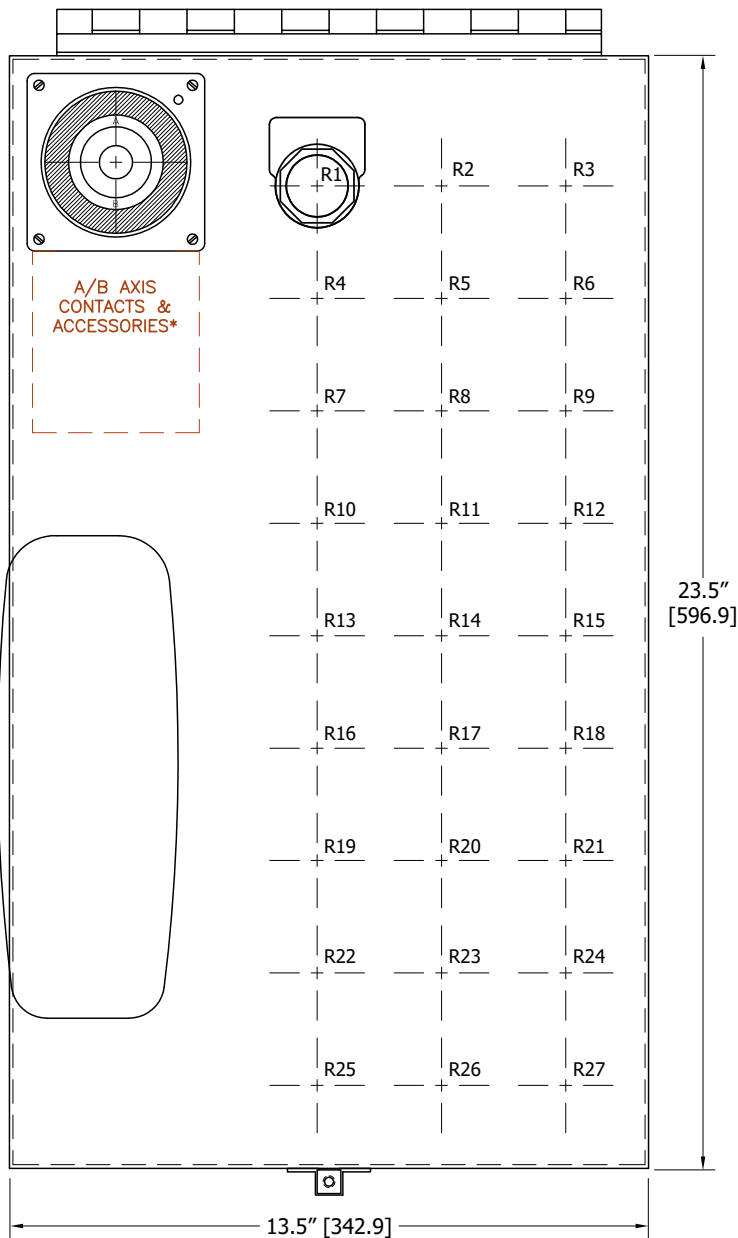
\*Outline represents joystick drive with 5 contact blocks or 2 contact blocks with a potentiometer or encoder

# 13.5" CONSOLE

**LEFT CONSOLE**  
SHOWN WITH 2-AXIS JOYSTICK



**RIGHT CONSOLE**  
SHOWN WITH 1-AXIS CONTROLLER

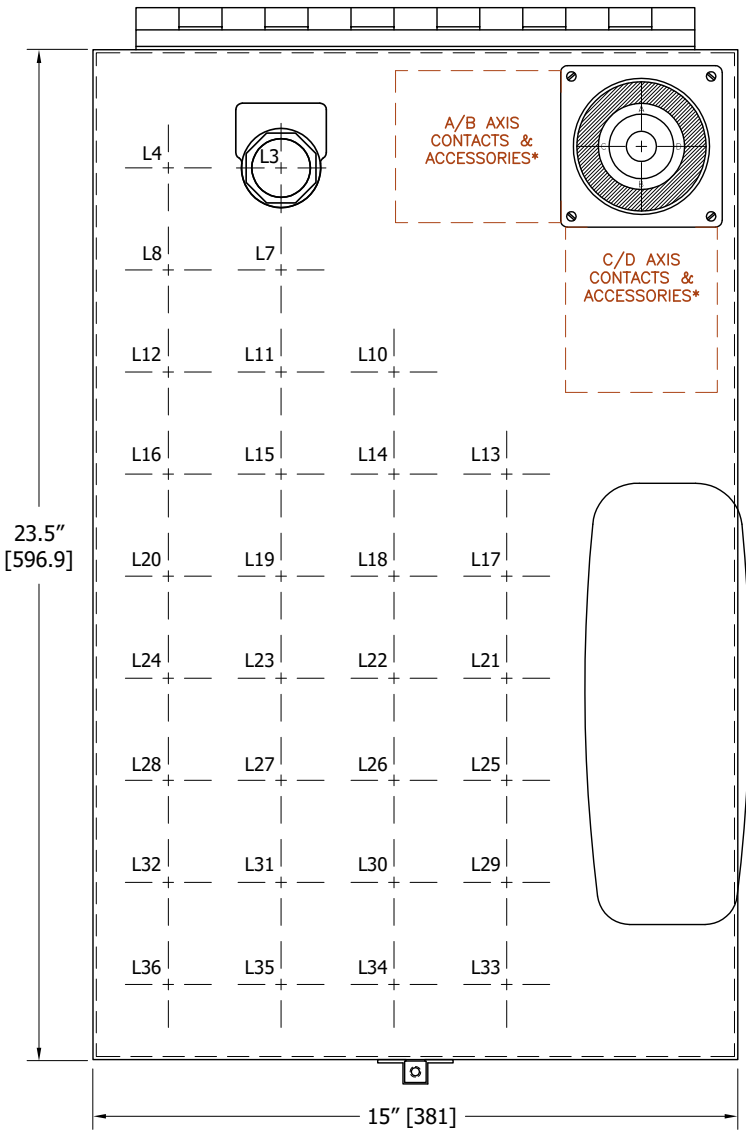


\*Outline represents joystick drive with 5 contact blocks or 2 contact blocks with a potentiometer or encoder

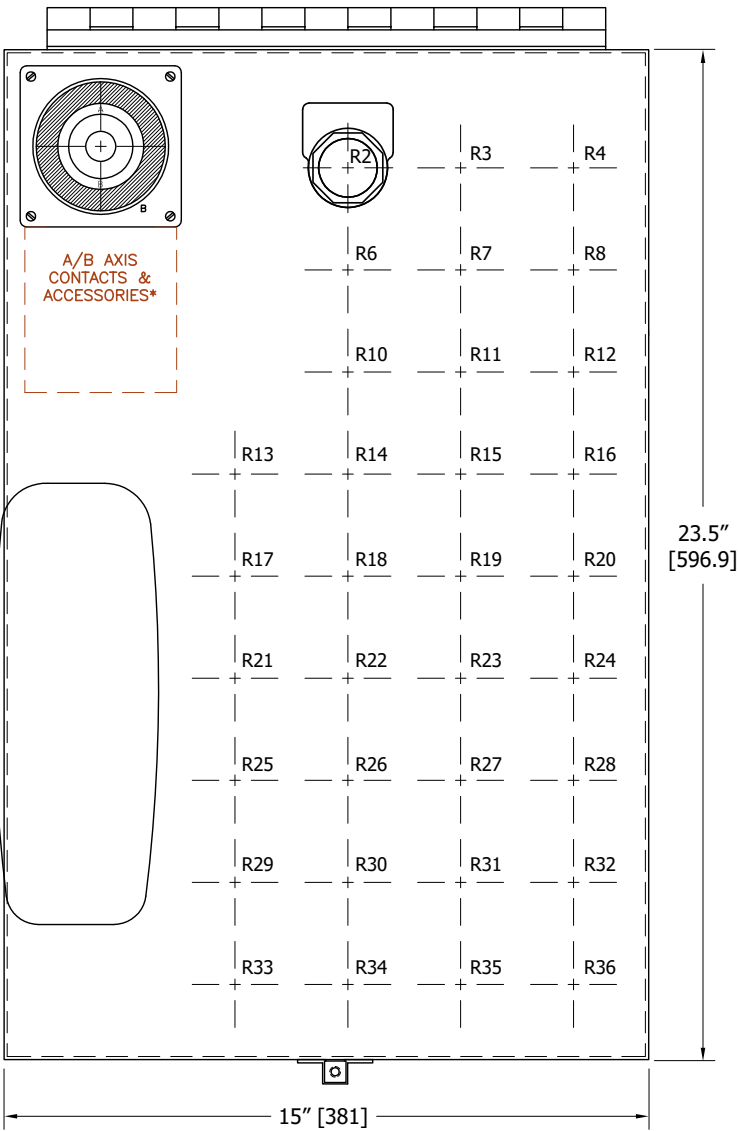


# 15" CONSOLE

**LEFT CONSOLE**  
SHOWN WITH 2-AXIS JOYSTICK



**RIGHT CONSOLE**  
SHOWN WITH 1-AXIS CONTROLLER



\*Outline represents joystick drive with 5 contact blocks or 2 contact blocks with a potentiometer or encoder