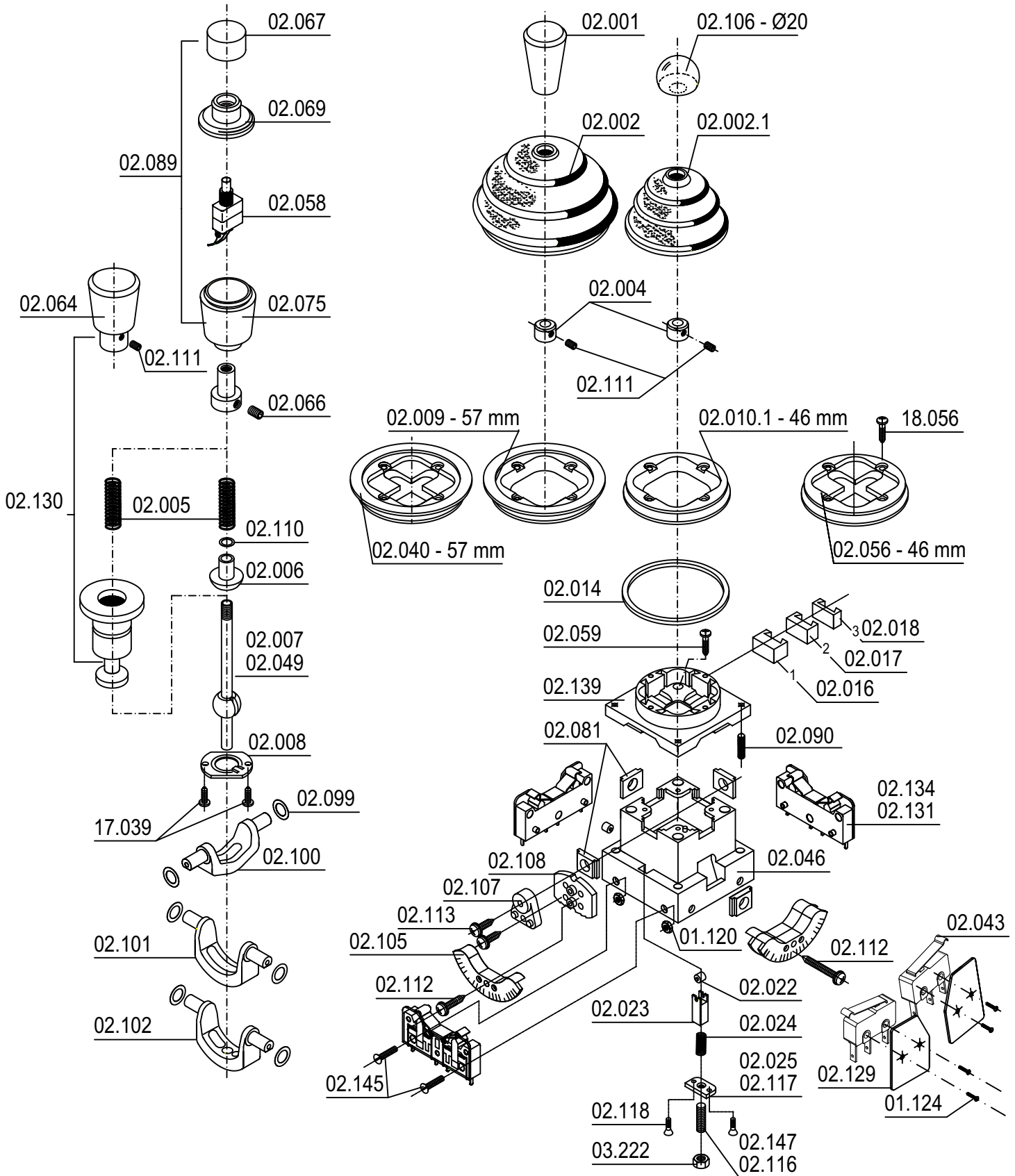


# MO/M2 SPARE PARTS

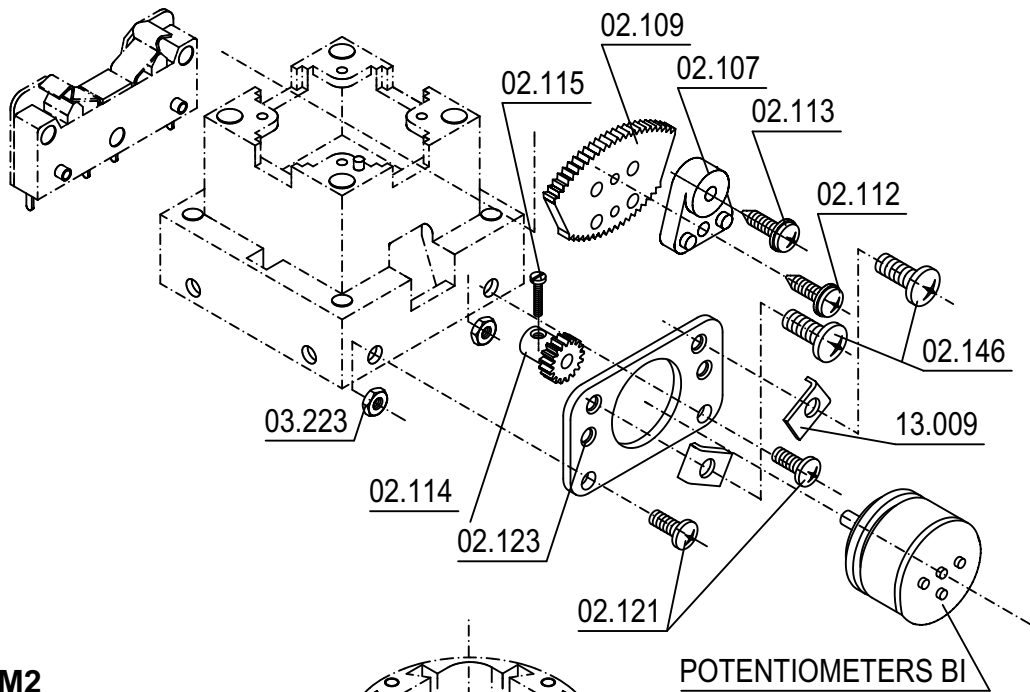


**J.R. MERRITT**   
**CONTROLS, INC.**

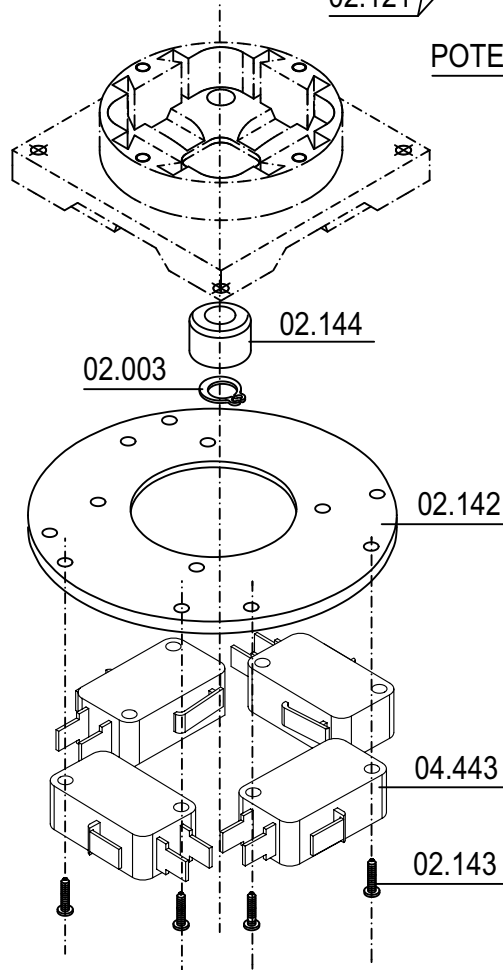
Stratford, CT • 1-800-333-5762 • [www.jrmerritt.com](http://www.jrmerritt.com)

# MO/M2 SPARE PARTS

## MO POTENTIOMETER



## M2 MICROSWITCHES



## MO/M2 SPARE PARTS LIST

item_no	item_desc_1	item_desc_2
01.120	Nut, Mtg Hex 2-56	For MO Microswitches
01.124	Screw, Micro mtg 2/56 X 7/16	Phil PH
02.001	Handle, MO	GN419-20-M5
02.002	Boot, MO-Large ++	MO24Z
02.003	Ring, Boot Grip M5	10055-03437
02.004	Collar, Adj Spring	ST5 DIN705
02.005	Spring, Return	MO9-9
02.006	Shuttle, Dome Spring	MO14D
02.007	Shaft, Operating, hollow 80mm	MO11H80
02.008	Collar, Bearing Retaining	MO22N
02.009	Gate, Open, MO, 57 mm	MO34-57
02.014	Gasket, Mounting 45x45x1	MO10A
02.016	Stop, Handle 1-0-1	MO23-1
02.017	Stop, Handle 2-0-2	MO23-2
02.018	Stop, Handle 3-0-3	MO23-3
02.022	Roller, Detent	MO01N 11041
02.023	Shuttle, Detent	MO02N 10753
02.024	Spring, Detent	MO2FN 13596
02.025	Base Cover, Detent w/set screw	Federplatte Messing 8x15x1.5
02.040	Gate, Cross, MO, 57mm	MO34K-57
02.043	Microswitch, 125VAC, 5A ++	SS-5GL13T-A12 Omron
02.046	Body, MO	MO41N
02.049	Shaft, Solid-MO	MO11V84
02.056	Gate, Cross, MO, 46mm dia.	MO34K-46
02.058	Microswitch, MO PB +	13435AK
02.059	Screw, Mtg WN1442 KB25x10 MO	head to body
02.064	Handle for Mech Interlck	MO26Z
02.066	Screw, Set for Adaptor +	M4x4 DIN 916 *USE 18.111*
02.067	Cap, MO Pushbutton +	MO54-1
02.069	Cap, Handle 23mm	MO24-2
02.075	Handle, base, MO +	MO54-3
02.081	Bushing, Shaft MO Lager	MO51 10751
02.089	Handle w/Pushbutton, MO	
02.090	Screw, Set MO Head Mounting	M3x12mm DIN EN 27436
02.099	Spacer, Shim MO 10/6, 4x0,2	**USE 14.368**
02.100	Yoke, Op Double Axis (Small)	MO45
02.101	Yoke, Op Double Axis (Large)	MO46
02.102	Yoke, Single Axis	MO52
02.105	Cam, MO new style	MO50
02.106	Handle, Ball 20mm, MO	KU20M5
02.107	Support, MO Cam Detent	MO47
02.108	Detent, 0 degree to 3-0-3 MO++	MO48
02.109	Gear, MO Pot master, Drive	MO56
02.110	Spacer, Brass, MO S.R. Shuttle	07/5x0,1
02.111	Screw, Set M3x3 Flat Point	DIN 913 Black
02.112	Screw, PT Pan Head KA25x8	WN-1412 KA25x8
02.113	Screw, PT Pan Head KA25x7	WN-1412 KA25x7
02.114	Gear, Pot Slave, MO	MO32-15.05-3.0
02.115	Screw, SCHMS M1.6x6	DIN 84 M1.6x6 Zinc
02.116	Screw, Set Cup Point Black	M4x8 DIN 916
02.117	Cover, Detent spring Adjust MO	Federplate Messing

## MO/M2 SPARE PARTS LIST

02.118	Screw, SFHMS M2x8	DIN 963 M2x8 Zinc
02.121	Screw, PPHMS M3x8 *USE 03.236*	DIN 7985 M3x8 (BAG/100)
02.123	Plate, Pot, MO	MO32-PL310
02.129	Insulator, Microswitch, MO	A10.5260 Rev01
02.130	Head, MO, Z MI 2 Axis, Sm boot	
02.131	Contact Block, MO Gold	GM036K2
02.134	Contact Block, MO Standard	SM036K2
02.139	Head, MO w/o set screws	MO31N
02.142	Plate, M2 10 AMP Microswitch	MO42WW
02.143	Screw, M2 10 AMP Microswitch	WN1412/KB30x16
02.144	Roller, M2 10 AMP Microswitch	MO42-1
02.145	Screw, SFHMS M2.5x14	DIN 963 M2.5x14
02.146	Screw, PPHMS M4x6	DIN 7985 M4x6 Zinc
02.147	Screw, Set Flat Point M4x8	DIN 913 M4x8 Black
03.222	Nut, Hex, M4	4mm DIN 934ZP (BAG/500)
03.223	Nut, Hex, 3mm	DIN 934ZP M3 (BAG/200)
04.443	Microswitch w/Lever, 250VAC11A	D3V-11G1-1C25K
13.009	Clamp, Pot Holder MO	NS045-39A
17.039	Screw, PT Pan Head	KA22x 6.5 WN1412
18.056	Screw, BH shell, Oval ph hd	13577-KA2512 plated (BAG/500)
02.002.1	Boot, MO-Small	MO24A 48mm dia.
02.010.1	Gate, Open, MO, 46mm dia	MO34-46