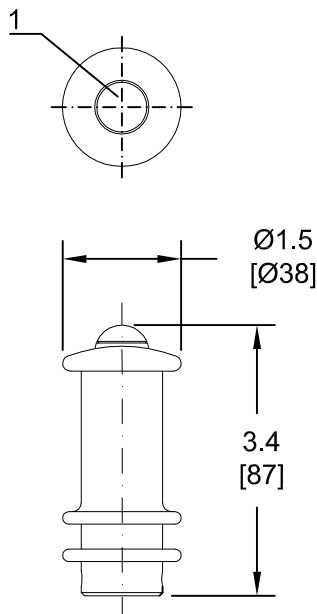


# PALM HANDLES MG9, MG25 DIMENSIONS

## MG9

IP 56

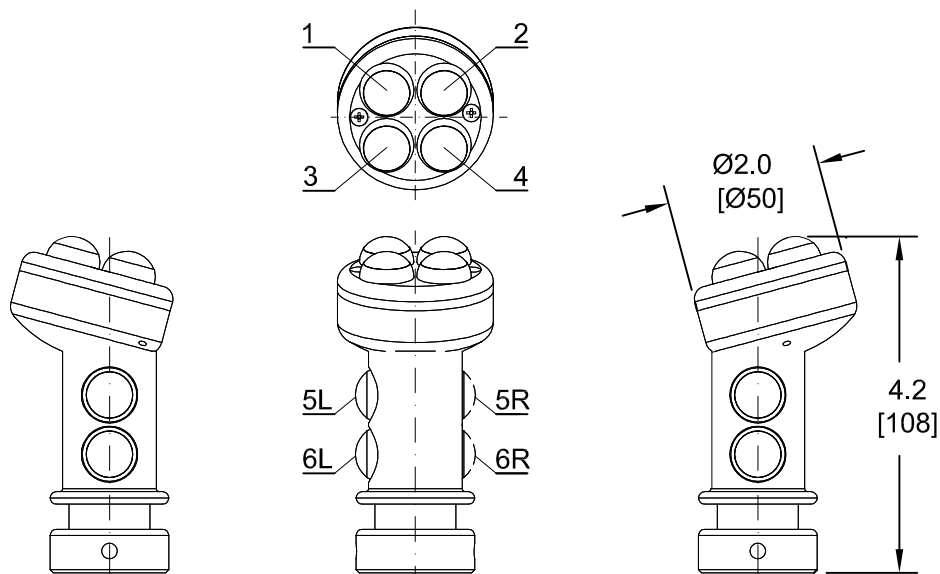
1 push button max.



## MG25

IP 56

6 push buttons max.



### ORDERING EXAMPLE:

	<b>MG9</b>	<b>8</b>	
	<b>MG25</b>	<b>10</b>	
Type _____		<b>12</b>	<b>2 RED</b>
Ø shaft mm			
PRO4, PRO6, CS1, VCS2,			
CS3HD, VNSO, XLVNSO, VNS2			
Push button in position 2 red			

### NOTE:

1. Push button: 1 N.O. - 1A, 28 VDC.
2. Number of conductors may be limited on some controllers.
3. 28 VDC max.
4. Overall handle IP protection rating is dependent on push button manufacturers ratings.

**J.R. MERRITT** 

**CONTROLS, INC.**

Stratford, CT • 1-800-333-5762 • [www.jrmerritt.com](http://www.jrmerritt.com)