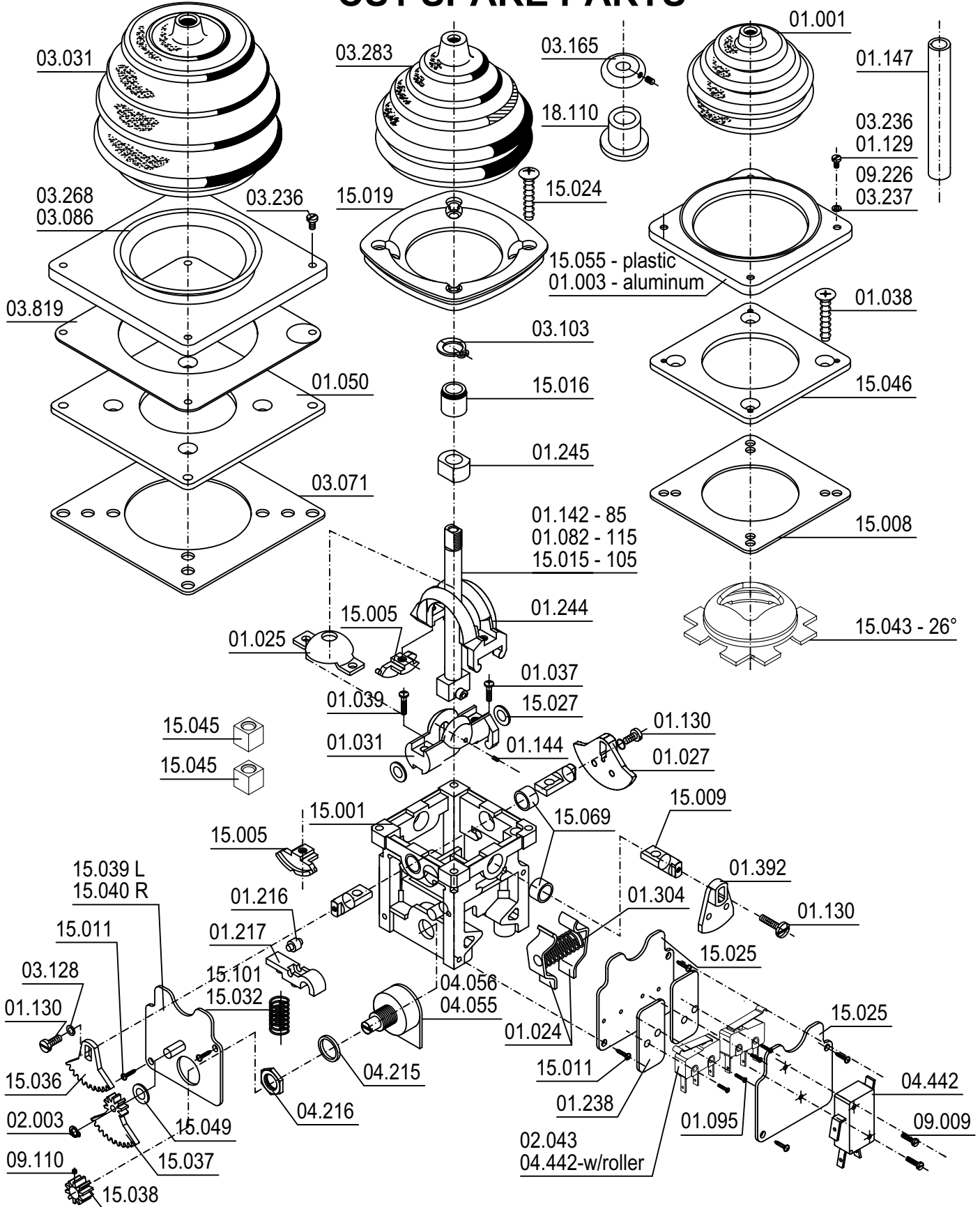


# CS1 SPARE PARTS



**J.R. MERRITT**   
**CONTROLS, INC.**

Stratford, CT • 1-800-333-5762 • [www.jrmerritt.com](http://www.jrmerritt.com)

## CS1 SPARE PARTS LIST

item_no	item_desc_1	item_desc_2
01.001	Boot, Rubber, Small ++	V040KE2
01.003	Nameplate, Black Alum, 72x72 +	V0044
01.024	Arm, Spring Return CSO	CSORH
01.025	Retainer, Yoke, single axis	A10.101.1382 R04
01.027	Cam, Blank, CSO	CSO61
01.031	Yoke, Operating CSOE V ++	CSO63
01.037	Screw, Yoke Spring return dbl	DIN 7985 AM4x10 20606
01.038	Screw, Mtg Alum, Phil flat PT	zinc KB40x16 WN1413 (BAG/200)
01.039	Screw, M4x15	DIN 7985 AM4x15 20607
01.050	Plate, Mtg Universal VCSO	A10.101.5443 R04
01.082	Shaft, Operating 105mm ++	CSO41A-105
01.095	Screw, micro mtg-1 contact	2-56 x 3/8
01.129	Screw, Nameplate Alum Mtg	M3x4mm DIN 85 (BAG/200)
01.130	Screw, Cam New Style	M3X6 Din 921
01.142	Shaft, Operating 85mm ++	CSO41A-85
01.144	Pin, Yoke	M2x6 DIN 1472 (BAG/500)
01.147	Insulator, Shaft, VCSO sleeve	OD10.3x43.80mm ++
01.216	Roller, Detent, VCSO/CS1 ++	VCSO13R
01.217	Arm, Detent, VCSO/CS1 Detent++	CSO13R
01.238	Insulator, Microswitch, CS1	A10.101.4922 R00
01.244	Yoke, Crossover, VCSO ++	VCSO62AG
01.245	Block, Guide-VCSO-Steel ++	VCSO62G
01.304	Spring Return, Std VCSO/CS1 ++	CSO-36-d1.4-L36-n9
01.392	Cam, Directional, White CS1 ++	CSO61A-CS1
02.003	Ring, Boot Grip M5	10055-03437
02.043	Microswitch, 125VAC, 5A ++	SS-5GL13T-A12 Omron
03.031	Boot, Rubber, Black, VO41N	VO41N replaces 03.031.1 ++
03.071	Gasket, Rubber 96 x 96	IDV006Z SK1107DH-REV01
03.086	Nameplate, Plastic, Screw-on	96 x 96mm VO48K
03.103	Clip, E-Shaft Grip Ring ++	A8 Size 10055-03338 (BAG/200)
03.128	Washer, Rib M3	S3 3mm
03.165	Bushing, Boot	NSO ES5H
03.236	Screw, PPHMS M3x8	DIN 7985 Steel Zinc (BAG/200)
03.237	Washer, Nameplate-Plastic Mtg	M3 DIN 125A (BAG/200)
03.268	Nameplate, Black Alum, 96x96 +	V048AL63
03.283	Boot, Rubber, Friction Brake	VO41K
03.819	Insert, Plastic Screw on plate	IDV006F
04.055	Pot, Clarostat, 5K 3Wire Cond	Plastic A20.101.4971 Rev04
04.056	Pot, Clarostat, 10K 4Wire Cond	Plastic A20.101.4966 R04
04.215	Washer, Pot	K-700
04.216	Nut, Potentiometer	K710
04.442	Microswitch, w/Roller T02	V7-7B17D8-201

## CS1 SPARE PARTS LIST

item_no	item_desc_1	item_desc_2
09.009	Screw, 4/40 x 1/2, PPH	
09.110	Screw, Set, Cup Pt. M3x3	DIN 916 M3x3 Black
09.226	Washer, Thick Flat M3 DIN 7349	Steel Zinc Plated (BAG/200)
15.001	Body, CS1	CS101 (10144)
15.005	Detent, CS1	CS1-07
15.008	Gasket, Rubber, CS1	CS1-16D
15.009	Shaft, Cam, CS1, Brass ++	CS1-13
15.011	Screw, Pot Plate Mounting, CS1	KA30x6 WN1412 (BAG/200)
15.015	Shaft, Operating, CS1 105mm ++	CSO41V-101
15.016	Bushing, Stop CS1 Gate ++	VCSO42AR
15.019	Plate, Mounting Plastic, CS1	CS1-22
15.024	Screw, Mounting Plate Plastic	KB40x16 WN1412
15.025	Plate, Microswitch, CS1 Univ.	A10.101.5530 R03
15.027	Spacer, shim .2mm, VCSO CS1	C110565
15.032	Spring, Detent CS1 ++	VCSO13FS
15.036	Gear, Pot, Master, 30 Degree	CS1 CS1-08-27 (New Style)
15.037	Gear, Pot, Idler, 30 Degree	CS1 CS1-08-12-28 (New Style)
15.038	Gear, Pot, Slave, 30 degree ++	CS1 CSO71F12-6.4 (New Stlye)
15.039	Plate, Pot Left, 30 Degree	CS1-05LZ
15.040	Plate, Pot Right, 30 Degree	CS1-05RZ
15.043	Gate, Open, CS1, 26 Degree	VCSO42AK26 ++
15.045	Detent, Bang-Bang CS1	CS1-29
15.046	Plate, Mounting, CS1	A10.101.5327 Rev04
15.049	Washer, Flat M5 OD-10mm	DIN 125 Zinc 91166A240
15.055	Nameplate, Plastic, CS1	B15.101.6626 R05
15.069	Bushing, Metal, Body, CS1	0806DU (14180)
15.101	Spring, Detent CSO/CS1	B-2
18.110	Bushing, Boot, Brass, 9mm	A15.101.6356 R02