

# FPHD

## HEAVY DUTY FOOT PEDAL

**J.R. MERRITT**  
CONTROLS



Built for tough environments, the FPHD is an all-metal foot pedal that delivers precise, long-lasting control. With contactless Hall-Effect technology and multiple configuration options, the FPHD offers smooth performance and rugged durability where it matters most.



HEAVY DUTY &  
DURABLE



CUSTOMIZABLE  
DESIGN



CONTACTLESS  
OUTPUT



### FEATURES

- Built with all-metal construction to ensure outstanding durability.
- Configurable design allows customization to suit your specific application.
- Compact footprint makes it ideal for tight installation spaces.
- Provides smooth progressive pedal for precise operational control

### AVAILABLE OUTPUT TYPES

- Analog Hall Effect Output
- PWM
- CAN



### APPLICATIONS



Agriculture



Airports



Construction/  
Off-Highway



Forestry



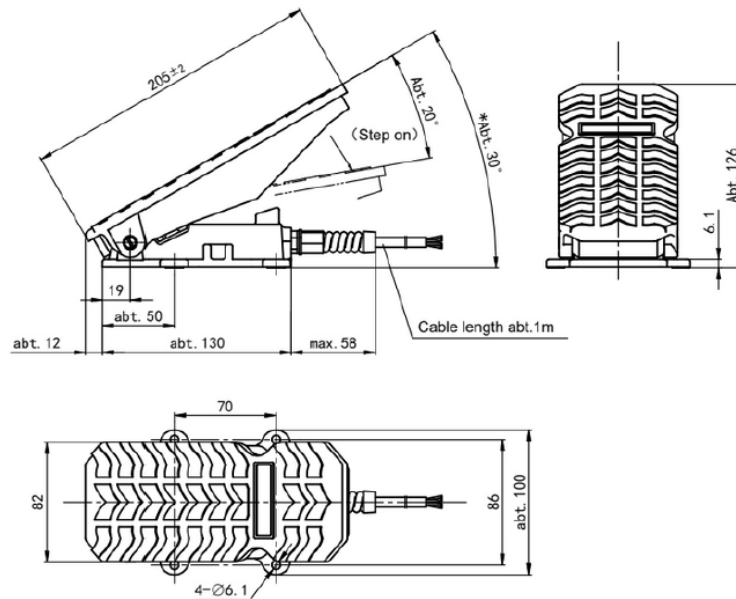
Road  
Maintenance



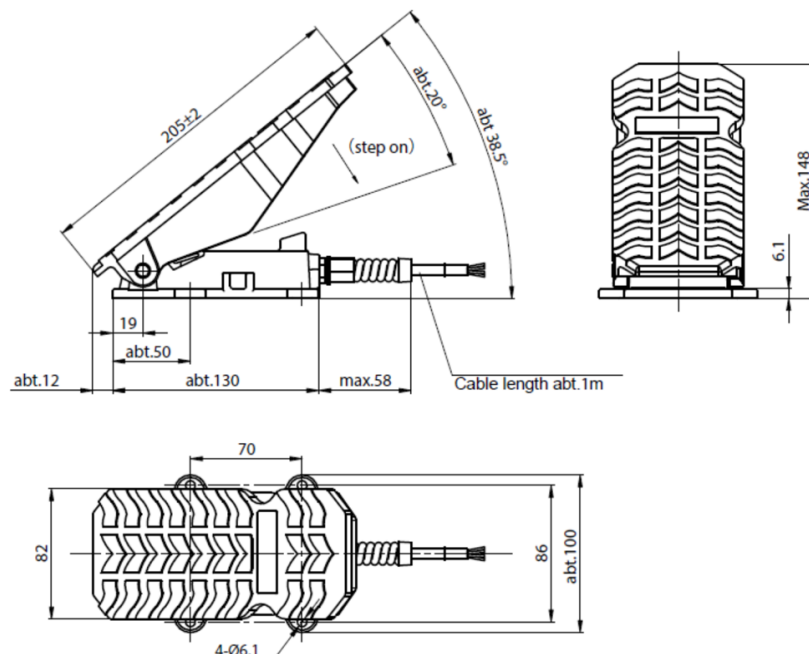
Waste &  
Recycling

# DIMENSIONS AND MOUNTING

## 30 Degrees of Travel

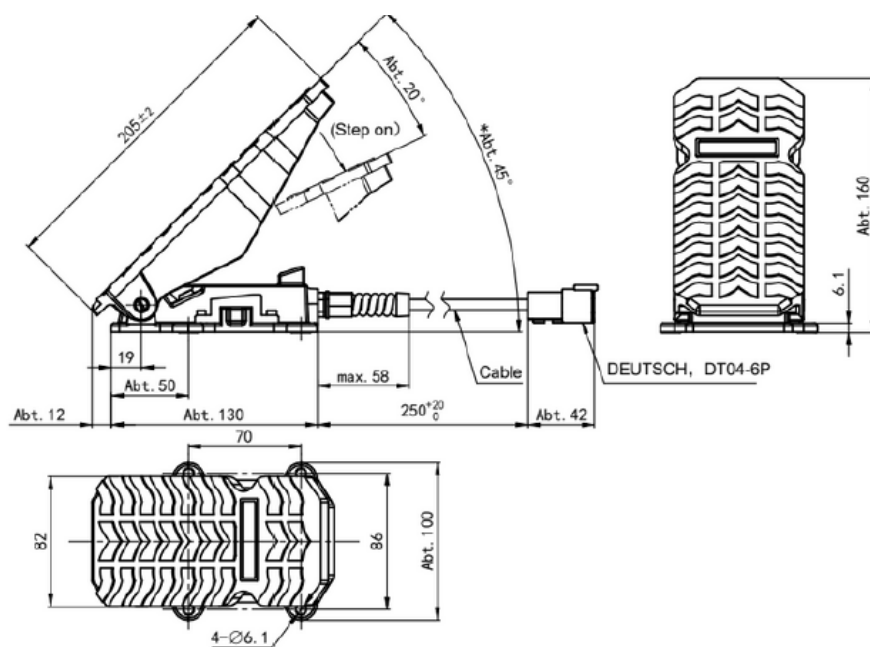


## 38 Degrees of Travel

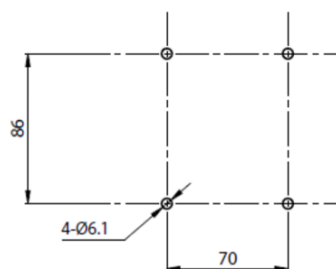


# DIMENSIONS AND MOUNTING

## 45 Degrees of Travel



## PANEL MOUNTING





# SPECIFICATIONS

## TERMINAL CONNECTION DIAGRAM

GREEN	BLUE	YELLOW	WHITE	BLACK	RED
-	-	-	OUT	GND	VCC

### MECHANICAL SPECIFICATIONS

<b>Pedal Travel</b>	Approx. 20°
<b>Operating Force</b>	10 ~ 60N
<b>Mechanical Life</b>	20 Million life cycles
<b>Vibration</b>	10 ~ 55Hz 98m/s <sup>2</sup>
<b>Shock</b>	294m/s <sup>2</sup>

### ENVIRONMENTAL SPECIFICATIONS

<b>IP Rating</b>	IP65
<b>Operating Temperature</b>	-40° F to 185° F [-40° C to 85° C]
<b>Storage Temperature</b>	-40° F to 185° F [-40° C to 85° C]

### ELECTRICAL SPECIFICATIONS HALL-EFFECT

<b>Supply Voltage</b>	9-30 VDC
<b>Output</b>	4.5 - 0.5 VDC
<b>Independent Linearity Tolerance</b>	3%
<b>Current Consumption no-load</b>	<10mA
<b>Output Deviation of Both Ends</b>	<1% VCC

### ELECTRICAL SPECIFICATIONS SWITCH

<b>Switched Output</b>	3° of initial stepping
<b>Rating</b>	Level signal and max 5mA