

NSO-1

Rotary DC Master switch

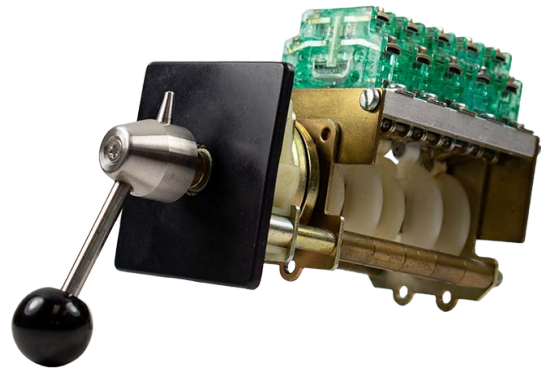
Application:

The **TYPE NSO-1 Rotary DC Master Switches** are characterized by their rugged construction and unmatched versatility. They are utilized for in-plant process control and in material handling applications.

These devices are especially suitable for use in Steel and Aluminum Rolling Mills and Foundries. The NSO-1 withstands the rigors of high duty cycle and interrupts inductive DC loads.

The S800 field replaceable contact system features 1 N.O. and 1 N.C. silver-plated double break snap action contact with magnetic arc suppression.

This unique contact system changes electrical state independent of operator action, eliminating any possibility of contact teasing. The snap action mechanism and the added air gap of the double break contacts, coupled with magnetic arc suppression, provide the most ideal solution for extinguishing the arc of highly inductive DC loads.



Features:

- Step or stepless action, maintained or momentary, 2-12 positions.
- Solid square steel operating shaft.
- Heavy duty handle stops.
- Brass bearings.
- Compact modular design.

Contacts:

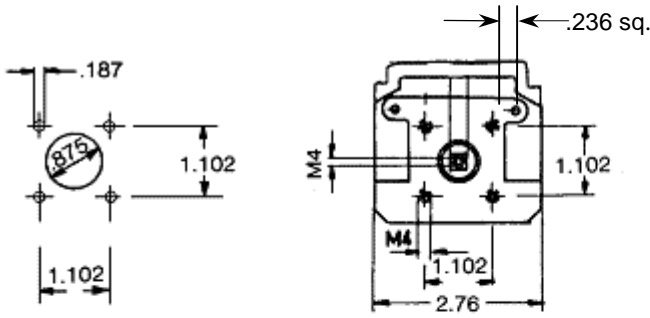
- Field replaceable snap action, double break DC contacts with magnetic arc suppression. Up to 12 circuits standard.

Options:

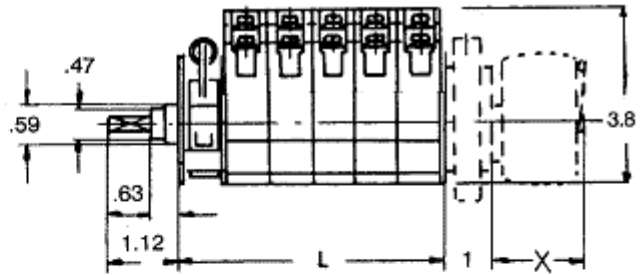
- Handles: teardrop, ball lever and pistol grip
- Sealed Nema 4x construction with non-ferrous components suitable for marine use.
- Enclosures: Nema 1, 3R, 12, 13, 4, 4x, 7 and 9.
- Potentiometers, Rheostats, Encoders, gear driven or directly coupled.

NSO-1 DIMENSIONS

PANEL MOUNTING DETAIL



INSERT MOUNTING



PANEL MOUNTING WITH ESCUTCHEON 2.83" x 2.83

Number of double break contact blocks

Consult factory for G.E. or Westinghouse Mounting

"L" dim. w/detent	NSO-11	NSO-12	NSO-13	NSO-14	NSO-15	NSO-16	NSO-17	NSO-18	NSO-19	NSO-110	NSO-111	NSO-112
"L" dim. w/sp.ret.	NSO-11R		NSO-12R	NSO-13R	NSO-14R	NSO-15R	NSO-16R	NSO-17R	NSO-18R	NSO-19R	NSO-110R	NSO-11R
Length "L"	1.26	1.97	2.52	3.15	3.74	4.33	4.92	5.51	6.10	6.69	7.28	7.87

For ordering: See order form

TECHNICAL DATA

MECHANICAL:

- Handle Travel: 2-12 positions
- Switch Angle: 30°, 45°, 60° and 90°
- Stepless Handle Travel: 0-270° with directly coupled potentiometer ±60° with gear driven potentiometer
- Potentiometer Rotation: ±140°, 280° total
- Operations: Rated duty cycle: 1000 operations per hour
- Mechanical life: Maintained action: 10 million plus operations
- Operating Temperature: -25° to +70°C

ELECTRICAL:

- DC Inductive rating:

Amp	VDC
10	24
6	48
1.0	125
0.6	250
- T=30 Ms

CONTACT CONSTRUCTION:

- Contacts: 1 N.O. and 1 N.C. double break nickel silver alloy contacts with non-teasable snap action mechanism.
- Max # of circuits: 12
- Housing: Green Makrolon plastic case
- Operators: Roller or plunger
- Terminals: Saddle clamp
- Wire size: No. 18-12 AWG

J.R. MERRITT 
CONTROLS, INC.

Stratford, CT • 1-800-333-JRMC • www.jrmerritt.com