

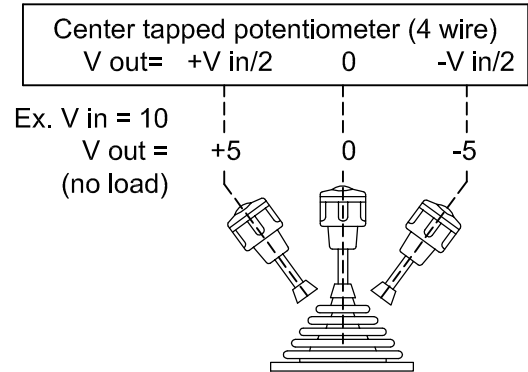
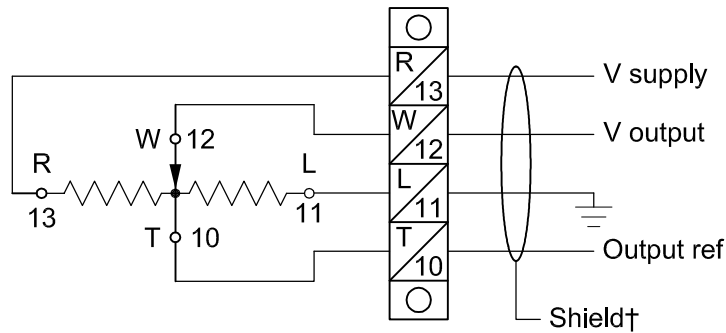
ENGINEERING CHANGES / REVISIONS

REV	DATE	BY	ECR	DESCRIPTION	APPR
04	08/08/14	KY	23.589	UPDATED INFORMATION & DRAWING BORDER	
05	10/09/22	KY	01.219.583	ADDED CTS POT, REMOVED CLAROSTAT	GR

JRMC WIRED

CUSTOMER WIRED

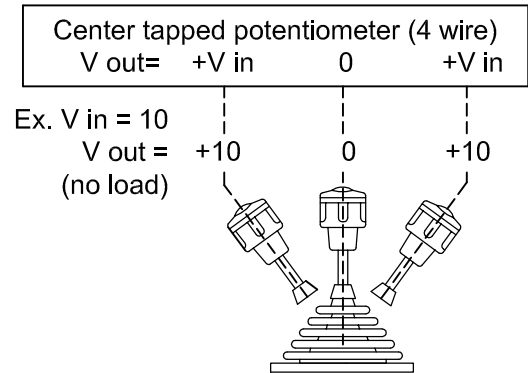
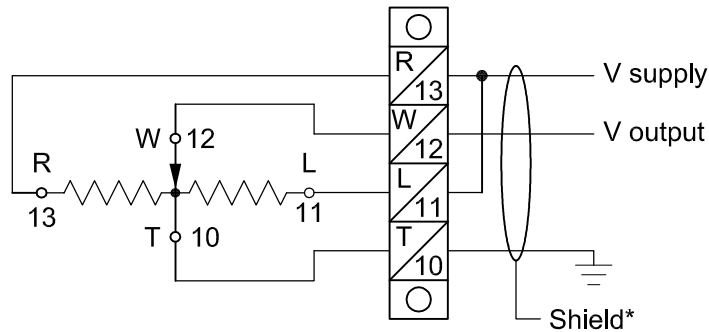
PLUS / MINUS CONTROL



†Shielded cable is recommended (4 Conductor, e.g. Belden 9418)

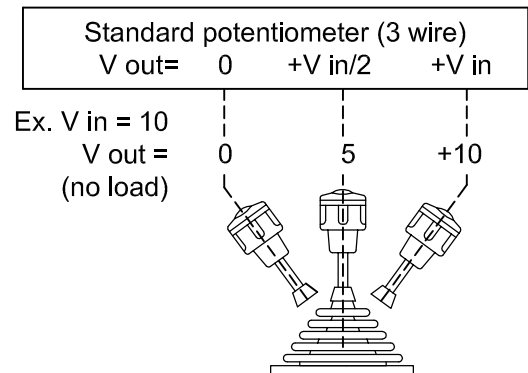
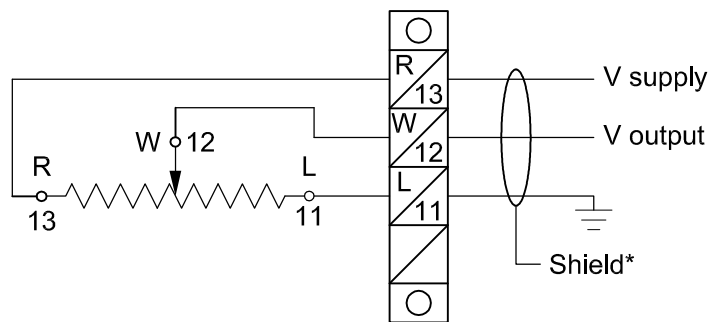
For ±10V out apply 20V in

PLUS / PLUS CONTROL



*Shielded cable is recommended (3 Conductor, e.g. Belden 8618, 8770)

PLUS (THROTTLE) CONTROL



NOTE - FOR ALL SKETCHES:

Depending on mounting and pot rotation, it may be necessary to change output polarity by swapping supply & ground connections

POTENTIOMETER	RATING	TYPE	WIPER CURRENT MIN / MAX	LIFE (CYCLES)	ELECTRICAL ANGLE
CTS (standard)	0.5 Watt	Conductive plastic	0mA / 10mA	2 Million	260°
BI tech 6143 (standard)	1 Watt	Conductive plastic	0mA / 1mA	10 Million	260°
PW55/PD550	3 Watt	Wire wound	25mA / 100mA	10 Million	250°
PEC	2 Watt	Carbon element	0mA / 60mA	1 Million	260°
PW70	5 Watt	Wire wound	25mA / 120mA	10 Million	240° (4w), 350° (3w)
DP60	50 Watt	Wire wound	25mA / 500mA	1 Million	270°



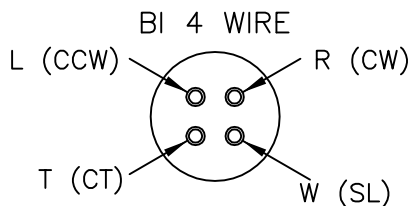
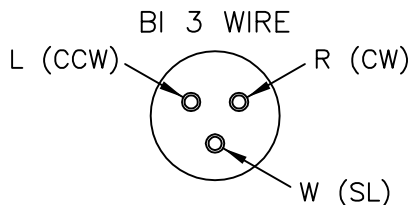
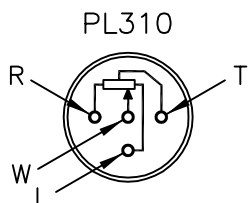
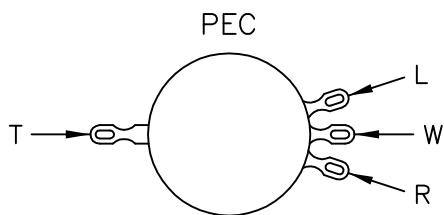
PUB. # 38.L3	CUSTOMER J.R. MERRITT CONTROLS, INC.		
DRAWN DW	DATE 12/19/97	QUOTE	JOB
CHECKED GAR	DATE 08/22/14	DESCRIPTION POT WIRING & SPECIFICATIONS	
APPROVED	DATE	DRAWING A45.101.3870	SHEET 1 of 1
			REV 05

THIS DOCUMENT CONTAINS DATA WHICH IS CONFIDENTIAL AND PROPRIETARY TO JRMC INC. NO DISCLOSURE, REPRODUCTION, OR ANY USE OF ANY PART OF THIS DOCUMENT MAY BE MADE WITHOUT THE WRITTEN PERMISSION OF JRMC INC.

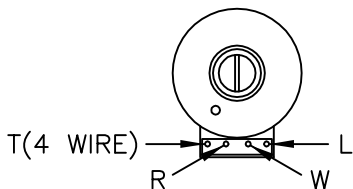
3870

ENGINEERING REVISIONS

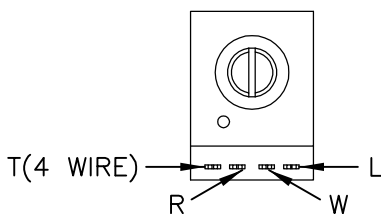
REV:	DESCRIPTION:	ECR NO:	BY:	DATE:	APR'D:
01	ADDED POT TYPE DESIGNATIONS	2783	KY	07/09/07	GAR
02	ADDED NOTES	3216	KY	06/12/08	DB
03	ADDED NOTE 3 & BI CW, CCW DESIGNATIONS	3975	KY	01/13/11	DB
04	ADDED CTS POTS	01.219.583	KY	10/09/22	GR



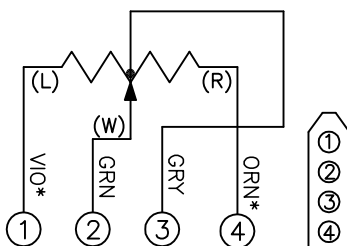
CLAROSTAT 3 & 4 WIRE



CTS 3 & 4 WIRE



4 WIRE POT

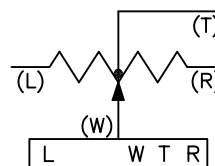


SEE NOTE 3

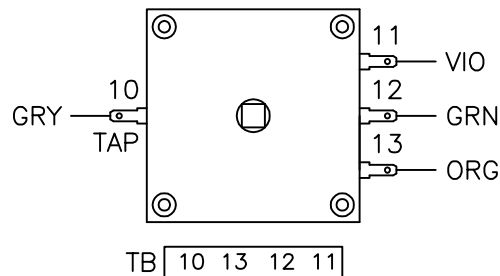
JOYSTICK CONNECTOR:	
CONNECTOR	CONTACTS
05.319	05.053

SUPPLY LOOSE	
CONNECTOR	CONTACTS
05.323	05.063

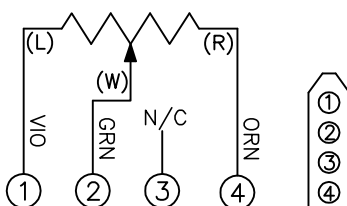
BOARD MOUNTED POTS



PD550



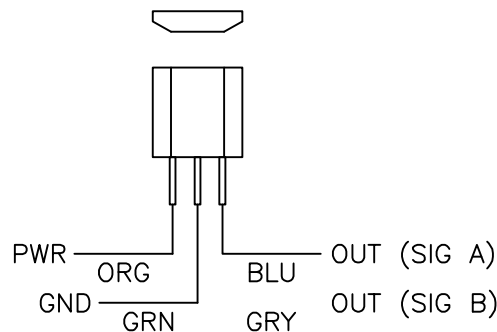
3 WIRE POT



JOYSTICK CONNECTOR:	
CONNECTOR	CONTACTS
05.319	05.053

SUPPLY LOOSE	
CONNECTOR	CONTACTS
05.323	05.063

HALL SENSOR



NOTES:

1. ALL WIRES - 20 AWG, COLOR AS SPECIFIED.
2. WIRES TO EXTEND 6" PAST BODY OF JOYSTICK.
3. BI POTS # 04.484 & 04.500;
R (CW) IS VIO WIRE
L (CCW) IS ORN WIRE

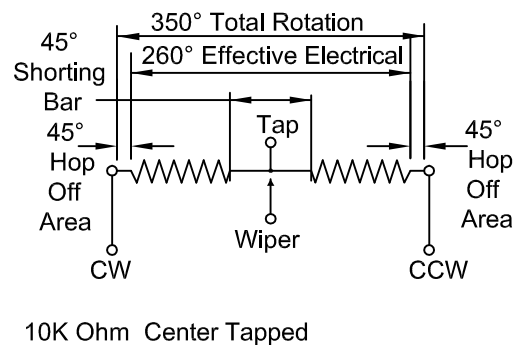
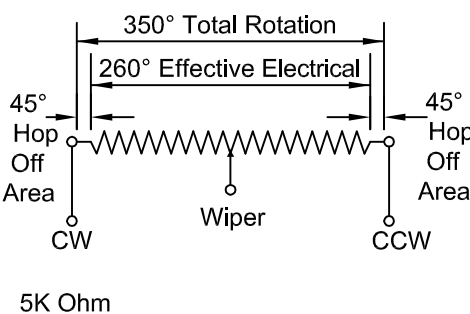
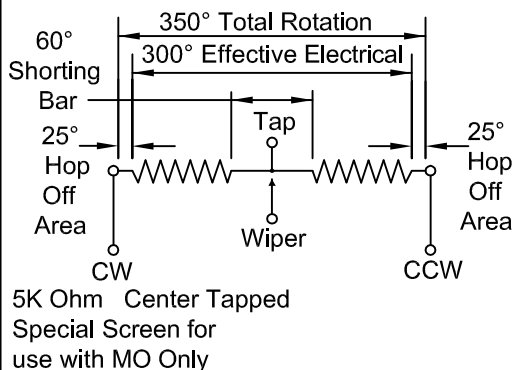
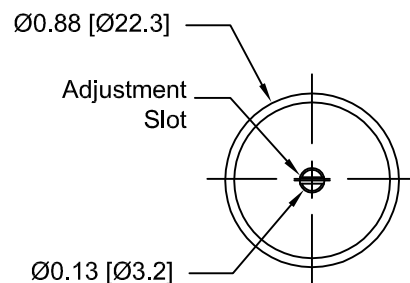
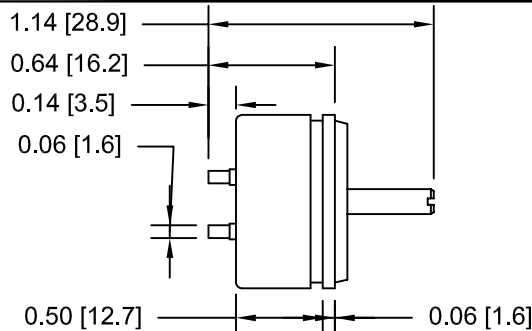
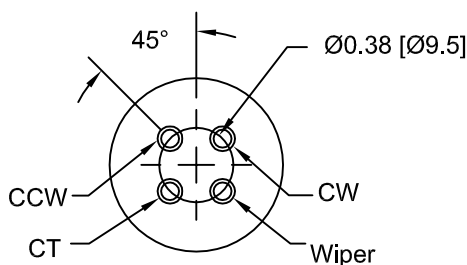


JOB NO:		CUSTOMER: J.R. MERRITT CONTROLS, INC.		6397	
DRAWN: KY	DATE: 08/11/05	POT WIRING STANDARD			SCALE: N/A
APPROVED: GAR	DATE: 11/03/06	MODEL NO:	SHEET: 1 OF 1		
PUB NO: WEB DOC	DWG NO:	A25.101.6397			REV: 04 SIZE: A

STANDARD POTENTIOMETERS

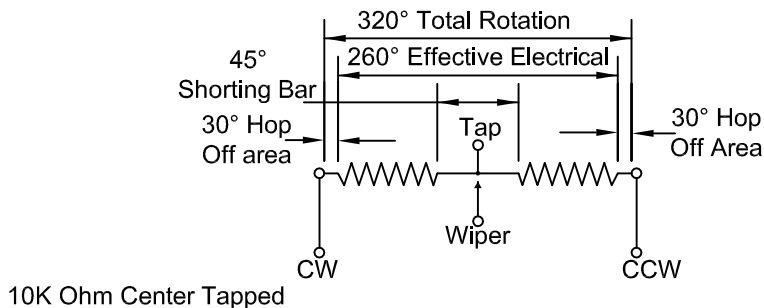
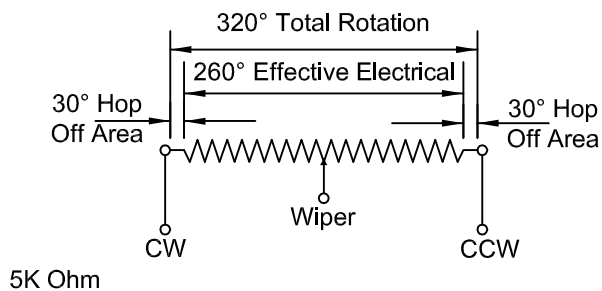
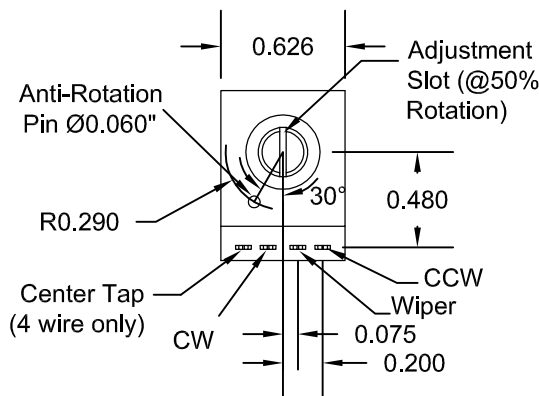
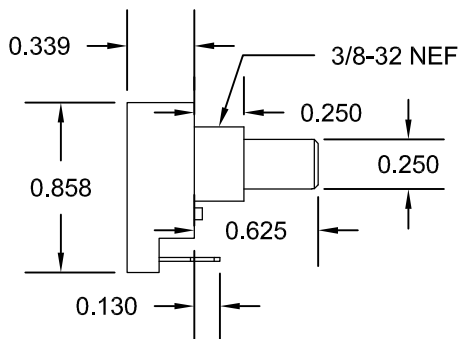
Type 6143 BI Conductive Plastic Potentiometer

10 Million + Revolutions Rotational Life



Type T282 CTS Conductive Plastic Potentiometer

2 Million + Revolutions Rotational Life



(consult factory for special requirements.)

J.R. MERRITT 
CONTROLS, INC.

Stratford, CT • 1-800-333-5762 • www.jrmerritt.com