

BH HANDLE

The BH handle boasts a lever-operated push button that's ideal for applications requiring an operator presence switch. The handle is designed with a 15° tilt for operator hand comfort and is fully gasketed for outdoor use.



SPECIFICATIONS

GENERAL DATA

Type	Rocker, Lever Handle
Specification Description	Rocker style handle that features a lever-operated push button that's ideal for applications requiring an operator presence switch.
Joystick Compatibility	CS3, CS3 B/B, VNSO, XL-VNSO, VNS2, VCSO, VCS2, CS1, PRO-4, PRO-5, PRO-6, NSO-SFA, NS2-K

FEATURES AND FUNCTIONALITY

Push Buttons	✓
Rocker Switch	✓
Thumbwheel	✗
Handrest	✗
Trigger	✗
Operator Presence Switch	Yes, lever operated push button
Mechanical Interlock	✗
Twist	✗
Capacitive Hand Detection Sensor	✗

TECHNICAL DATA

Handle Height	4.5 in [115 mm]
---------------	-----------------

Additional Specifications Reference product literature for additional specifications

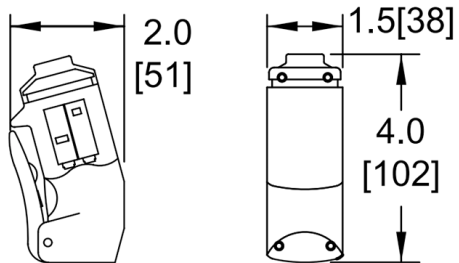
ENVIRONMENTAL DATA

IP Rating	IP54
-----------	------

Technical Drawings

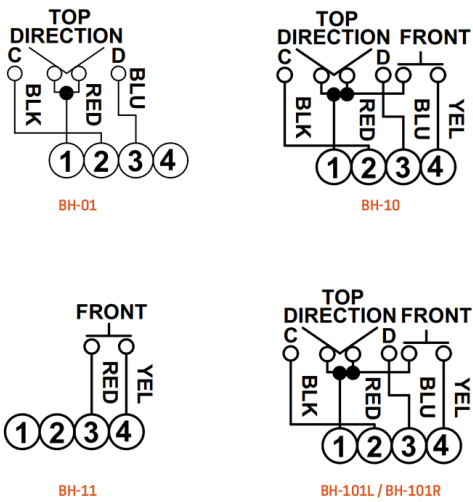
Dimensional

All dimensions in inches [mm] and are subject to change.

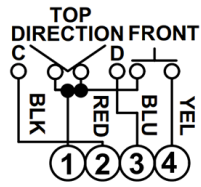


BH dimensions

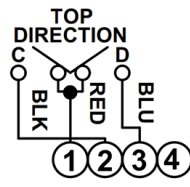
Wiring



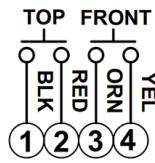
BH-01, BH-10, BH-11 & BH-101L / BH-101R wiring



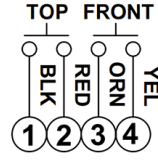
BH-102



BH-103

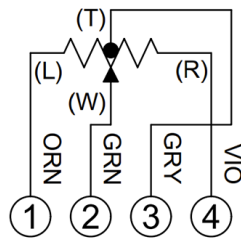


BH-104



BH-105

BH-102, BH-103, BH-104, & BH-105 wiring



BHM10

BHM10 wiring