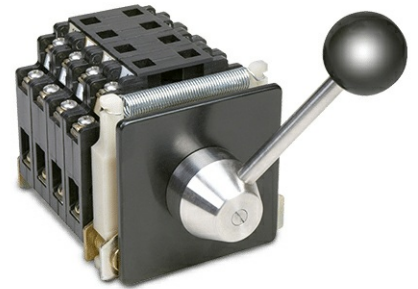


NS2-0 / NSB2-0 ROTARY SWITCH

NS2-0/NSB2-0 Rotary Master Switch features the same rugged design components and versatility as the NS2/NSB2 series of Joysticks.



SPECIFICATIONS

GENERAL DATA

Output Options	AC or DC Contacts, Potentiometer, Encoder & Transformer
Handle Action	Spring Return, Friction Brake or Maintained
Handle Travel	0-330 degrees Max. handle action in cast enclosure +/- 120 degrees
Max of Steps	Up to 7-0-7 or 0-16 positions
Handle Compatibility	Teardrop & chrome steel ball lever
Life	10 million cycles
Materials	Aluminum body and nickel chromium yoke.
Est. Shipping Weight	15-23 lbs.
Est. Shipping Dimensions	24 in. x 12 in. x 12 in.

MOUNTING DATA

Mounting Style	Panel (from below)
Mounting Footprint	4" x 4" See literature for additional mounting specifications

ENVIRONMENTAL DATA

IP Rating Up to IP66 / Nema 4x (with cast enclosure & round nameplate)

Operating Temperature -13 to +158 degrees F [-25 to +70 degrees C]

Storage Temperature -40 to +158 degrees F [-40 to +70 degrees C]

ELECTRICAL DATA

Switch Type:
Double Pole Contact Blocks

Max. Number:
Up to 10 contact blocks (20 circuits)

Max. Switching Capacity:
Making - 160 amps Breaking - (0.7PF) 240V 160 amps

Contact Specifications Rating (AC) NS2-0:
Continuous 25 amps @ 600V
Resistive 20 amps @ 240V
Inductive 14 amps @ 240V

Rating (DC) NSB2-0:
Resistive 5 amps @ 250V
Inductive 2 amps @ 250V

Termination:
Saddle Clamp

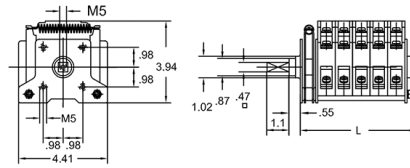
Max. Wire Size:
12 AWG

Additional Specifications Reference product literature for additional specifications

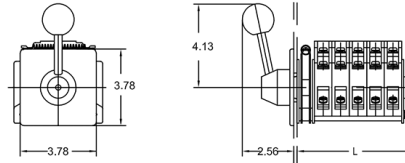
Technical Drawings

Dimensional

All dimensions in inches [mm] and are subject to change.



Mounting with 3.78 x 3.78" escutcheon plate

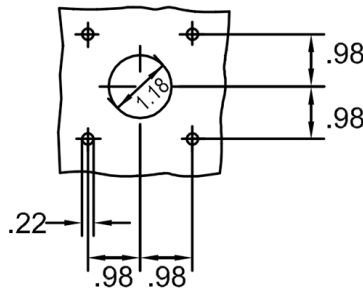


	Number of double pole contact blocks										
"L" dim. w/detent	NS201_	NS202_	NS203_	NS204_	NS205_	NS206_	NS207_	NS208_	NS209_	NS2010_	
"L" dim. w/sp.ret.	NSO01_R		NSO02_R	NSO03_R	NSO04_R	NSO05_R	NSO06_R	NSO07_R	NSO08_R	NSO09_R	NSO10_R
Length "L"	2.44	3.31	4.17	5.04	5.91	6.77	7.64	8.50	9.37	10.24	11.10

NS2-0 overall dimensions

Mounting

All dimensions in inches [mm] and are subject to change.



Panel mounting details