

FS1 FINGER SWITCH

The FS1 rugged finger switch features a glass-filled Zytel housing and non-ferrous components, and when used with the IP66 boot the sealed construction makes this device suitable for corrosive and hostile environments. Smooth and precise operation along with robust design make the FS1 perfect for a wide variety of applications.
Upcoming Discontinuation.



SPECIFICATIONS

GENERAL DATA

# of Axis	Single
Output Options	Hall-Effect
Joystick Action	Spring Return, Friction Brake
Handle Travel	+/- 25 degrees each axis
Life	20 million plus cycles
Materials	High strength, glass filled nylon housing.
Est. Shipping Weight	1 lbs.
Est. Shipping Dimensions	8 in. x 6 in. x 6 in.

MOUNTING DATA

Mounting Style	Panel (from below)
Mounting Footprint	1.8" x 1.2" (without boot) 1.9" x 1.3" (with boot) See literature for additional mounting specifications

ENVIRONMENTAL DATA

IP Rating IP54 (standard)
IP55 (without shaft seal)
IP67 (with optional boot)

Operating Temperature -13 to +158 degrees F [-25 to +70 degrees C]

Storage Temperature -40 to +158 degrees F [-40 to +70 degrees C]

ELECTRICAL DATA

Hall-Effect Specifications

Supply Voltage:
4.5 to 5.5 VDC

Output Voltage:
Ratiometric 0.5 - 2.5 - 4.5 +/- 0.15V @ 5.0V supply
Additional supply and output options available

Output Current: 10mA

Power Consumption: 20 mA @ full load

Termination:
24 AWG wire 12" leads with Molex connector

EMC Emissions: Complies with EN61000-6-4:2007 Class A Group 1, 80-1000 MHz

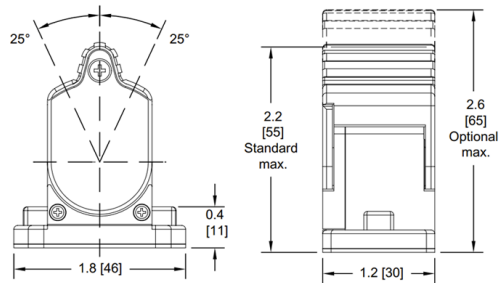
EMC Immunity: Complies with or exceeds EN61000-6-2:2005, expanded to include:
RFI Immunity of 100 V/M @ 80-1000 MHz
ESD Immunity of 15Kv air, 8Kv contact

Additional Specifications Reference product literature for additional specifications

Technical Drawings

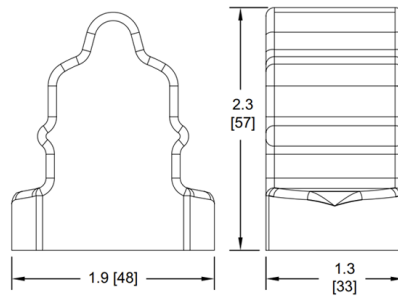
Dimensional

All dimensions in inches [mm] and are subject to change.



FS1 dimensions

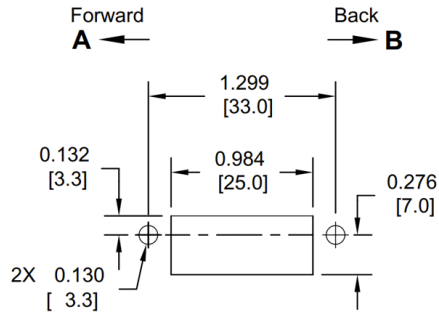
All dimensions in inches [mm] and are subject to change.



IP67 boot option dimensions

Mounting

All dimensions in inches [mm] and are subject to change.



Panel mounting (Mounts from below)

Wiring

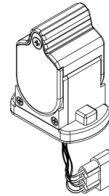
Wiring 4.5 to 5.5 VDC Supply:

PIN	COLOR	FUNCTION
1	ORN	+5.00 VDC
2	GRN	Ground
3	BLU	Signal out
4	WHT	Redundant signal out (optional)

7-30 VDC Supply:

PIN	COLOR	FUNCTION
1	YEL	+7-30 VDC
2	GRN	Ground
3	BLU	Signal out

Connections
4 Position MOLEX with male contacts mates with connector 03-06-2042 and female contacts 02-06-1103 (24-18 AWG).



Wiring & connection details